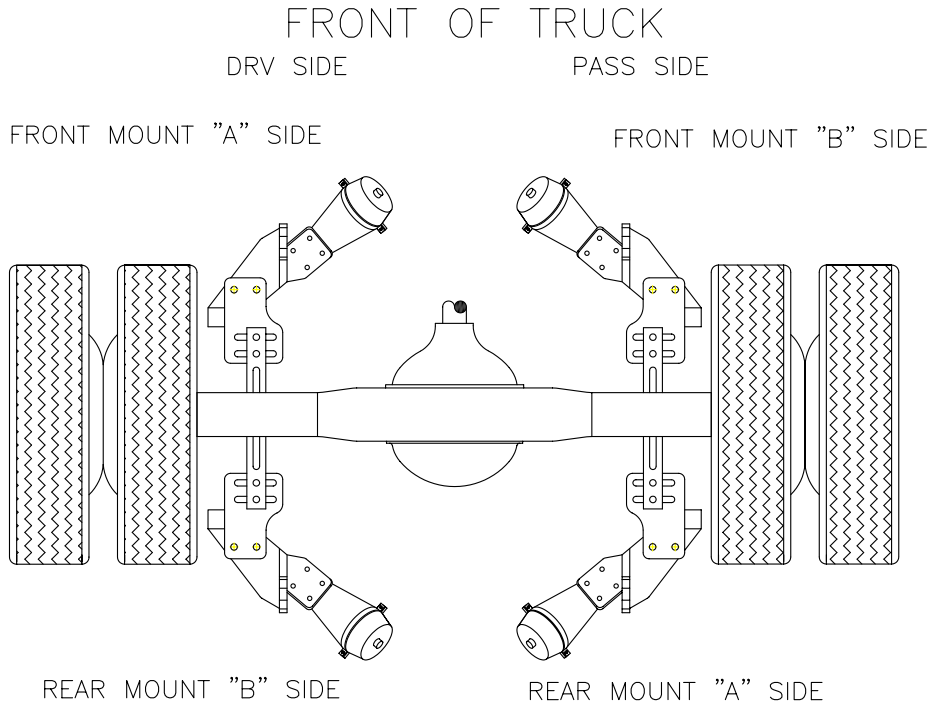


INSTA-CHAIN™
The AUTOMATIC ICECHAIN
2014 PARTS CATALOG



Welcome to the Insta-Chain catalog and thank you for your interest in our product. We would like you to make note of the following items as they may have changed or you may be unfamiliar with our product.

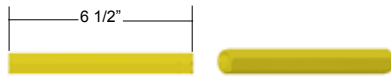
1. You will note that in the part numbers instead of seeing L and R, you will see A and B. This is due to how the Insta-Chain Units can mount either in front or behind the axle. For example: if your Chain Unit is mounted in FRONT of the axle the Left side would be the "A" side and the Right side would be the "B" side. If your Chain Unit is mounted to the REAR of the axle then the Left side would be the "B" side and the Right side would be the "A" side (see diagram below).



AIR CYLINDER COMPLETE:

1038 - W/ 6 1/2" EXTENSION COUPLING

1037 - W/ 3 1/2" EXTENSION COUPLING



0983 - 04,05,06 EXTENSION COUPLING
USED WITH THE FOLLOWING INSTA-CHAIN UNITS:
04/14-6300, 05/15-6300, 35-6300, 45-6300, 454-6300,
06/16-6300, 65/85-6300, 359-6300, 459-6300, 75-6350



0984 - 02,08 EXTENSION COUPLING
USED WITH THE FOLLOWING INSTA-CHAIN UNITS:
01-6300, 11-6300, 02/12-6300, 42/62-6300, 08/18-6300,
48/68-6300



P/N 1005 - BALL JOINT
INCLUDES LOCK-NUT &
LEFT-HANDED JAM NUT

0983 - 04,05,06 EXTENSION COUPLING
0984 - 02,08 EXTENSION COUPLING

0435 - LID - AIR CYLINDER

5248 - DIAPHRAGM

1039 - PUSH ROD

5134 - JAM NUT - PUSH ROD

5246 - SPRING - AIR CYLINDER

5241 - CLAMP BOLT - AIR CYLINDER

5242 - CLAMP WASHER - AIR CYLINDER

5208 - LOCK NUT - STUD BOLT

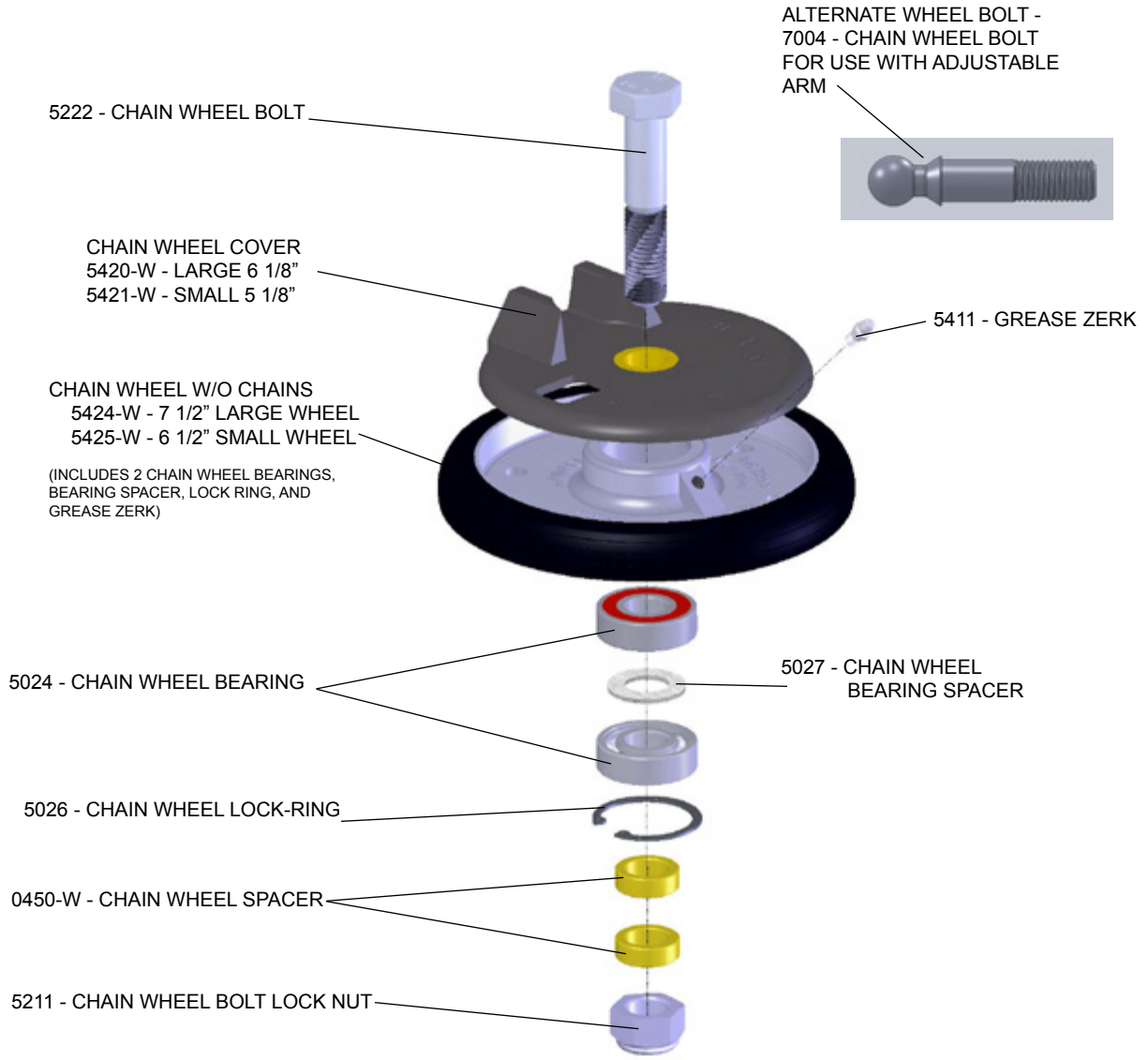
5295 - STUD BOLT - AIR CYLINDER

5454 - AIR CYLINDER HOUSING (WITH
STUD BOLTS & LOCK NUTS)

0534 - DUST SEAL

0438 - CLAMP - AIR CYLINDER (PAIR)

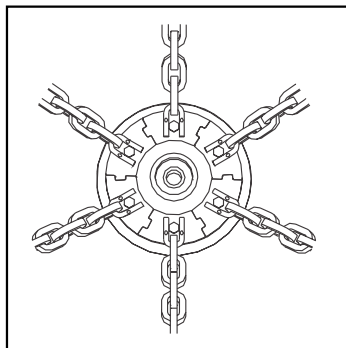
5128 - CLAMP NUT - AIR CYLINDER



CHAIN WHEELS COMPLETE AND REPLACEMENT CHAIN STRANDS

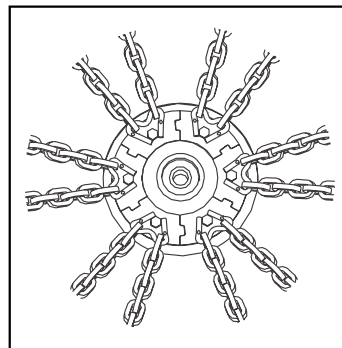
6 STRAND MODEL

DESCRIPTION	INDIVIDUAL STRANDS	WHEELS COMPLETE
LARGE SINGLE	0951	0961
SMALL SINGLE - 8 LINK	0953-8	0963-8
SMALL SINGLE - 10 LINK	0953-10	0963-10
LARGE SINGLE STAINLESS STEEL	0959	0969



12 STRAND MODEL

DESCRIPTION	INDIVIDUAL STRANDS	WHEELS COMPLETE
LARGE DOUBLE	0952	0962
SMALL DOUBLE - 8 LINK	0958-8	0968-8
SMALL DOUBLE - 10 LINK	0958-10	0968-10
LARGE DOUBLE STAINLESS STEEL	09569	09669

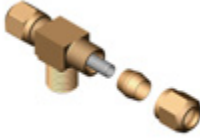




5080 - BRASS ELBOW 90° 3/8" x 1/4"



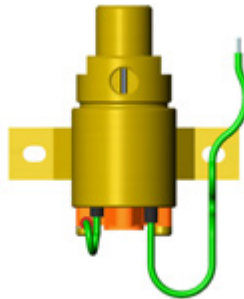
5181 - BUTT CONNECTOR - BLUE 16/14GA



5122 - BRASS T



5189 - PIGGY BACK CONN. - 14/16 GA



5047 - 12 VOLT SOLENOID VALVE w/ BOLTS, NUTS, AND WASHERS



5199 - SWITCH GUARD



5183 - RING CONNECTOR - 1/4" STUD / 14GA

5198 - TOGGLE SWITCH W/ GUARD



5200 - TOGGLE SWITCH



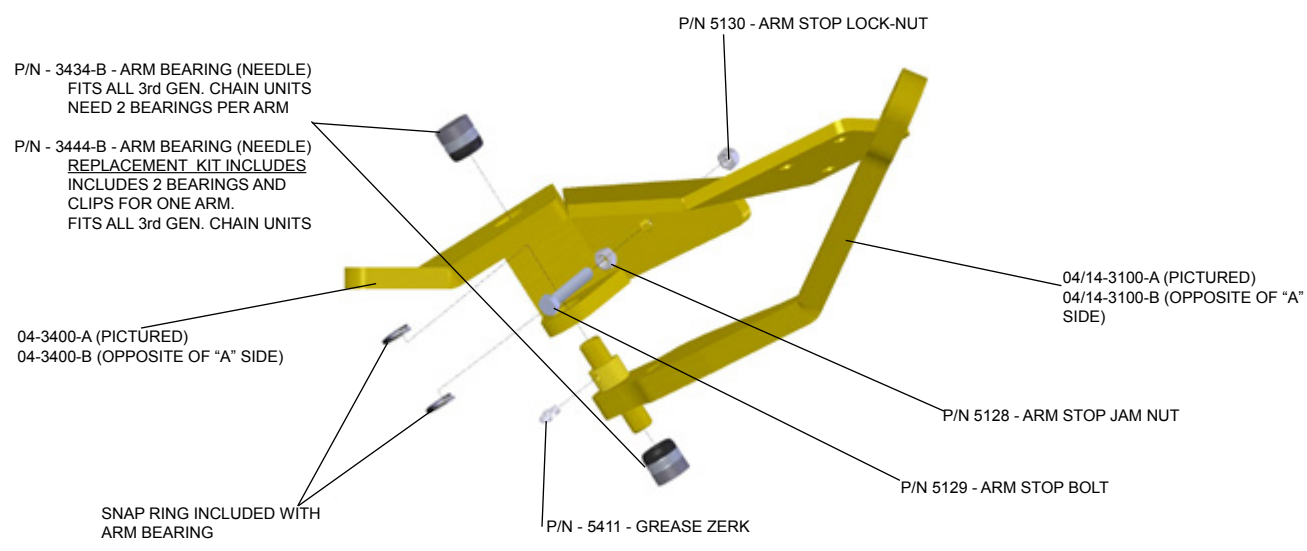
5184 - SPADE CONNECTOR - 14GA - 1/4"

SOLENOID PACKET INCLUDES:

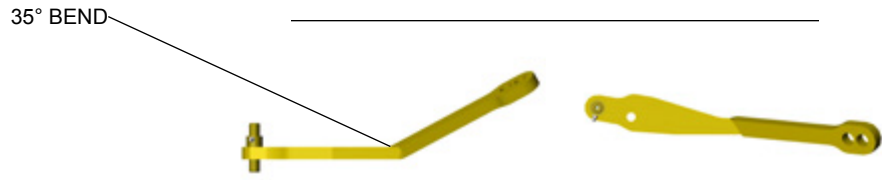
- 1 - 5047 - 12V SOLENOID VALVE w/ BOLTS, NUTS, AND WASHERS
- 1 - 5198 - TOGGLE SWITCH w/ GUARD
- 1 - 5122 - BRASS "T"
- 4 - 5080 - BRASS ELBOW 90° 3/8" x 1/4"
- 4 - 5184 - SPADE CONNECTOR 14GA - 1/4"
- 2 - 5183 - RING CONNECTOR - 1/4" STUD / 14GA
- 2 - 5189 - PIGGY BACK CONNECTOR - 14/16 GA
- 1 - 5181 - BUTT CONNECTOR - BLUE - 16/14GA
- 25FT - 5123 - 3/8" AIRLINE (NOT PICTURED)
- 40FT - 5180 - 14GA ELECTRICAL WIRE (NOT PICTURED)

04/14-6300 CHAIN UNIT

*NOTE - SOME OF THE ARMS LOOK SIMILAR, THE DIFFERENCES IN THESE ARMS LIE IN THE LENGTH OF THE ARM AND THE POSITIONING AND THE ANGLE OF THE BEND/ BENDS IN THE THEM.



04-3400-A (PICTURED)
04-3400-B (OPPOSITE OF "A" SIDE)
BEND IN MOUNTING PLATE OF CYLINDER BRACKET: 33°
USED FOR THE FOLLOWING CHAIN UNITS:
04/14-6300, 04/14-7300



04/14-3100-A (PICTURED)
04/14-3100-B (OPPOSITE OF "A" SIDE)
BEND IN ARM: 35°
USED FOR THE FOLLOWING CHAIN UNITS:
04/14-6300, 04/14-7300, 08/18-6300, 08/18-7300

04/14-6300 CHAIN UNITS ALSO USES THE FOLLOWING PARTS



P/N 1005 - BALL JOINT
INCLUDES LOCK-NUT &
LEFT-HANDED JAM NUT



P/N 1038 - 04, 05, 06 AIR CYLINDER COMPLETE
INCLUDES STUD BOLT LOCK-NUTS &
CYLINDER BRACKET GASKET

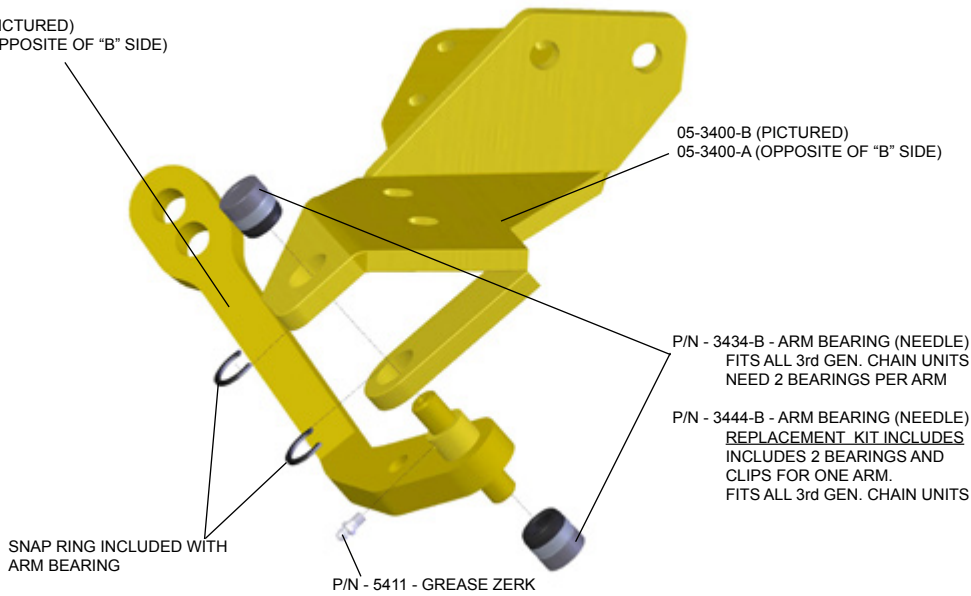


P/N 42-8000 - CHAIN TRAY
USED FOR THE FOLLOWING
CHAIN UNITS: 04/14-6300, 06/16-6300,
08/18-6300, 42/62-6300, 48/68-6300

05/15-6300 CHAIN UNIT

***NOTE - SOME OF THE ARMS LOOK SIMILAR, THE DIFFERENCES IN THESE ARMS LIE IN THE LENGTH OF THE ARM AND THE POSITIONING AND THE ANGLE OF THE BEND/ BENDS IN THE THEM.**

05/15-3100-B (PICTURED)
05/15-3100-A (OPPOSITE OF "B" SIDE)



05-3400-B (PICTURED)
05-3400-A (OPPOSITE OF "B" SIDE)

USED FOR THE FOLLOWING CHAIN UNITS:
05/15-6300, 05/15-7300



05/15-3100-A (OPPOSITE OF "B" SIDE)
05/15-3100-B (PICTURED)
BEND IN ARM: 43°
USED FOR THE FOLLOWING CHAIN UNITS:
05/15-6300, 05/15-7300

05/15-6300 CHAIN UNITS ALSO USES THE FOLLOWING PARTS

NOT INCLUDED IN REGULAR PRICE OF UNIT



P/N 1005 - BALL JOINT
INCLUDES LOCK-NUT &
LEFT-HANDED JAM NUT



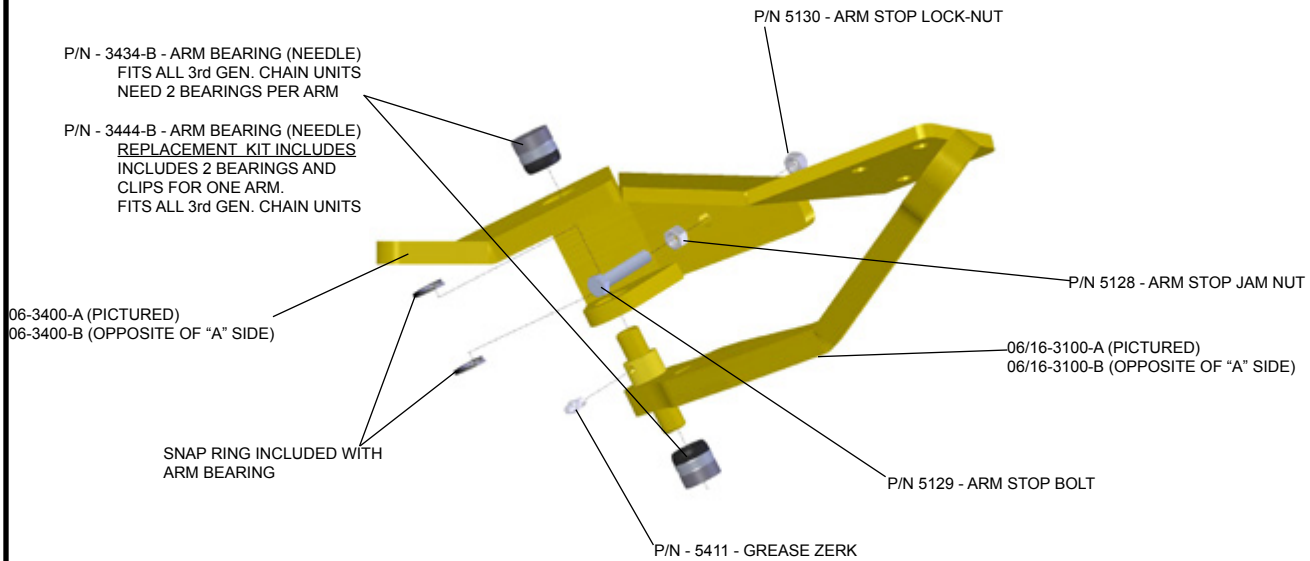
P/N 1038 - 04, 05, 06 AIR CYLINDER COMPLETE
INCLUDES STUD BOLT LOCK-NUTS &
CYLINDER BRACKET GASKET



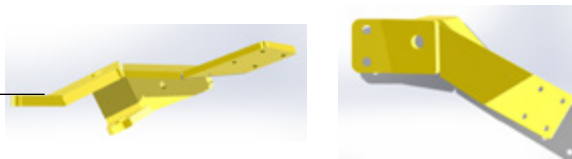
P/N 05-8000 - 05 CHAIN TRAY
05-8000-B (SHOWN)
05-8000-A (OPPOSITE OF
"B" SIDE)

06/16-6300 CHAIN UNIT

***NOTE - SOME OF THE CYLINDER BRACKETS AND ARMS LOOK SIMILAR, THE DIFFERENCES IN THESE LIE IN THE LENGTH OF THE BRACKET/ ARM AND THE POSITIONING AND THE ANGLE OF THE BEND/ BENDS IN THE THEM.**



25° BEND



06-3400-A PICTURED
06-3400-B (OPPOSITE OF "A" SIDE)
BEND IN MOUNTING PLATE OF CYLINDER BRACKET: 25°
USED FOR THE FOLLOWING CHAIN UNITS:
06/16-6300, 06/16-7300

27° BEND



06/16-3100-A (PICTURED)
06/16-3100-B (OPPOSITE OF "A" SIDE)
BEND IN ARM: 27°
USED FOR THE FOLLOWING CHAIN UNITS:
06/16-6300, 06/16-7300, 02/12-6300, 02/12-7300

06/16-6300 CHAIN UNITS ALSO USES THE FOLLOWING PARTS



P/N 1005 - BALL JOINT
INCLUDES LOCK-NUT &
LEFT-HANDED JAM NUT



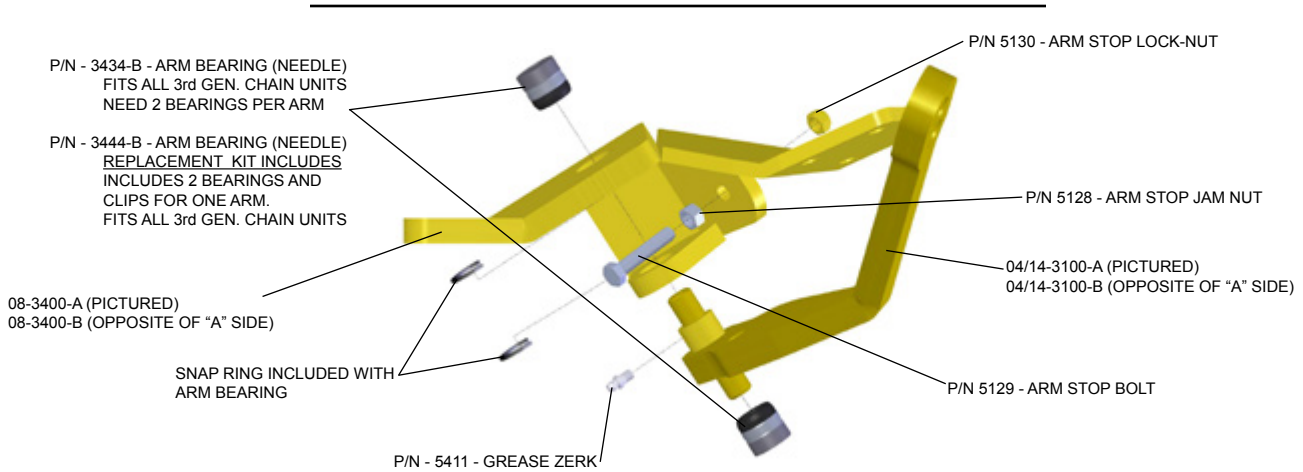
P/N 1038 - 04, 05, 06 AIR CYLINDER COMPLETE
INCLUDES STUD BOLT LOCK-NUTS &
CYLINDER BRACKET GASKET



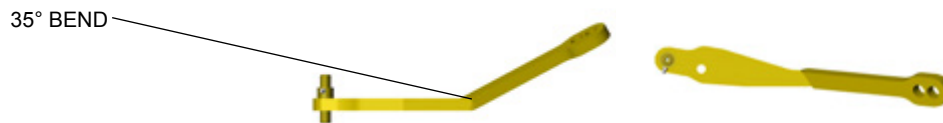
P/N 42-8000 - CHAIN TRAY
USED FOR THE FOLLOWING
CHAIN UNITS: 04/14-6300, 06/16-6300,
08/18-6300, 42/62-6300, 48/68-6300

08/18-6300 CHAIN UNIT
(LOW FLOOR BUS MODEL)

***NOTE - SOME OF THE CYLINDER BRACKETS AND ARMS LOOK SIMILAR, THE DIFFERENCES IN THESE LIE IN THE LENGTH OF THE BRACKET/ ARM AND THE POSITIONING AND THE ANGLE OF THE BEND/ BENDS IN THE THEM.**



08-3400-A PICTURED
08-3100-B OPPOSITE OF "A" SIDE
BEND IN MOUNTING PLATE OF CYLINDER BRACKET: 33°
USED FOR THE FOLLOWING CHAIN UNITS:
08/18-6300, 08/18-7300, 48/68-6300, 48/68-7300



04/14-3100-A (PICTURED)
04/14-3100-B (OPPOSITE OF "A" SIDE)
BEND IN ARM: 35°
USED FOR THE FOLLOWING CHAIN UNITS:
04/14-6300, 04/14-7300, 08/18-6300, 08/18-7300

08/18-6300 CHAIN UNITS ALSO USES THE FOLLOWING PARTS



P/N 1005 - BALL JOINT
INCLUDES LOCK-NUT &
LEFT-HANDED JAM NUT



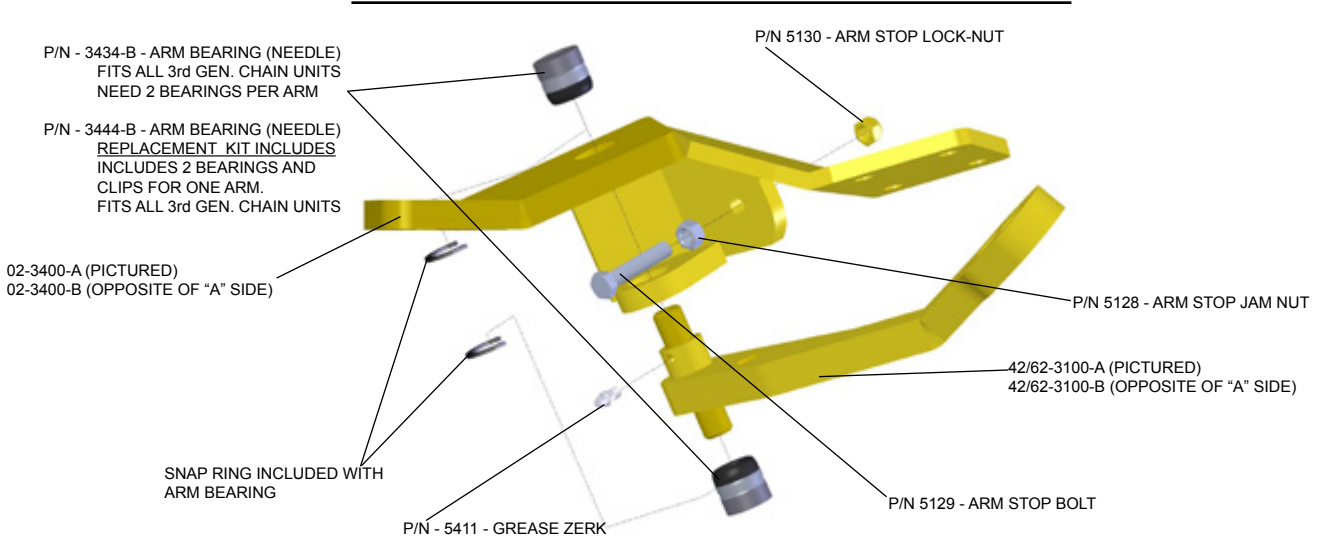
P/N 1037 - 02.08 AIR CYLINDER COMPLETE
INCLUDES STUD BOLT LOCK-NUTS &
CYLINDER BRACKET GASKET



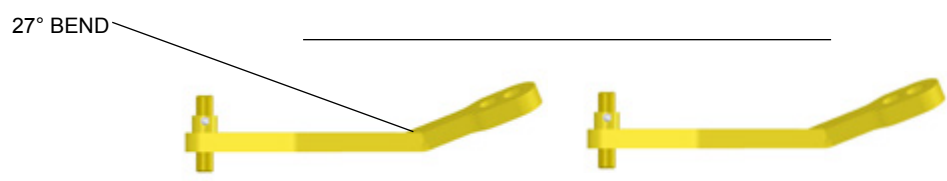
P/N 42-8000 - CHAIN TRAY
USED FOR THE FOLLOWING
CHAIN UNITS: 04/14-6300, 06/16-6300,
08/18-6300, 42/62-6300, 48/68-6300

42/62-6300 CHAIN UNIT

***NOTE - SOME OF THE CYLINDER BRACKETS AND ARMS LOOK SIMILAR, THE DIFFERENCES IN THESE LIE IN THE LENGTH OF THE BRACKET/ ARM AND THE POSITIONING AND THE ANGLE OF THE BEND/ BENDS IN THE THEM.**



02-3400-A PICTURED
02-3400-B (OPPOSITE OF "A" SIDE)
BEND IN MOUNTING PLATE OF CYLINDER BRACKET: 33°
USED FOR THE FOLLOWING CHAIN UNITS:
02/12-6300, 02/12-7300, 42/62-6300, 42/62-7300

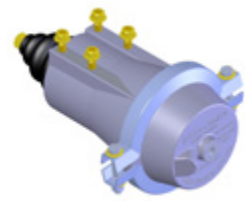


42/62-3100-A (PICTURED)
42/62-3100-B (OPPOSITE OF "A" SIDE)
BEND IN ARM: 27°
USED FOR THE FOLLOWING CHAIN UNITS:
42/62-6300, 42/62-7300

42/62-6300 CHAIN UNITS ALSO USES THE FOLLOWING PARTS



P/N 1005 - BALL JOINT
INCLUDES LOCK-NUT &
LEFT-HANDED JAM NUT



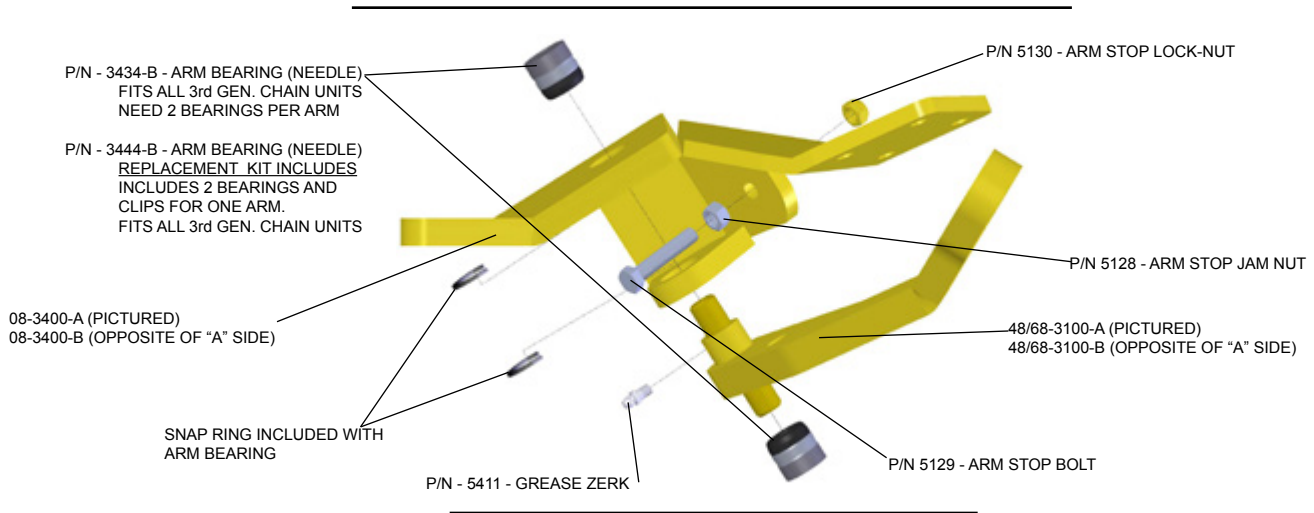
P/N 1037 - 02,08 AIR CYLINDER COMPLETE
INCLUDES STUD BOLT LOCK-NUTS &
CYLINDER BRACKET GASKET



P/N 42-8000 - CHAIN TRAY
USED FOR THE FOLLOWING
CHAIN UNITS: 04/14-6300, 06/16-6300,
08/18-6300, 42/62-6300, 48/68-6300

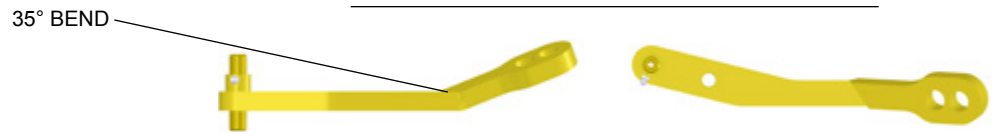
48/68-6300 CHAIN UNIT

***NOTE - SOME OF THE CYLINDER BRACKETS AND ARMS LOOK SIMILAR, THE DIFFERENCES IN THESE LIE IN THE LENGTH OF THE BRACKET/ ARM AND THE POSITIONING AND THE ANGLE OF THE BEND/ BENDS IN THE THEM.**



33° BEND

08-3400-A (PICTURED)
08-3400-B (OPPOSITE OF "A" SIDE)
BEND IN MOUNTING PLATE OF CYLINDER BRACKET: 33°
USED FOR THE FOLLOWING CHAIN UNITS:
08/18-6300, 08/18-7300, 48/68-6300, 48/68-7300



35° BEND

48/68-3100-A (PICTURED)
48/68-3100-B (OPPOSITE OF "A" SIDE)
BEND IN ARM: 35°
USED FOR THE FOLLOWING CHAIN UNITS:
48/68-6300, 48/68-7300

48/68-6300 CHAIN UNITS ALSO USES THE FOLLOWING PARTS



P/N 1005 - BALL JOINT
INCLUDES LOCK-NUT &
LEFT-HANDED JAM NUT



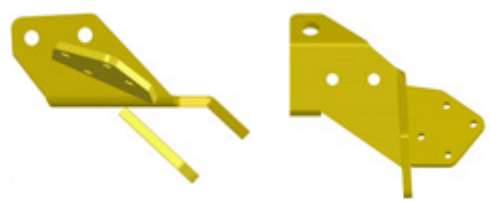
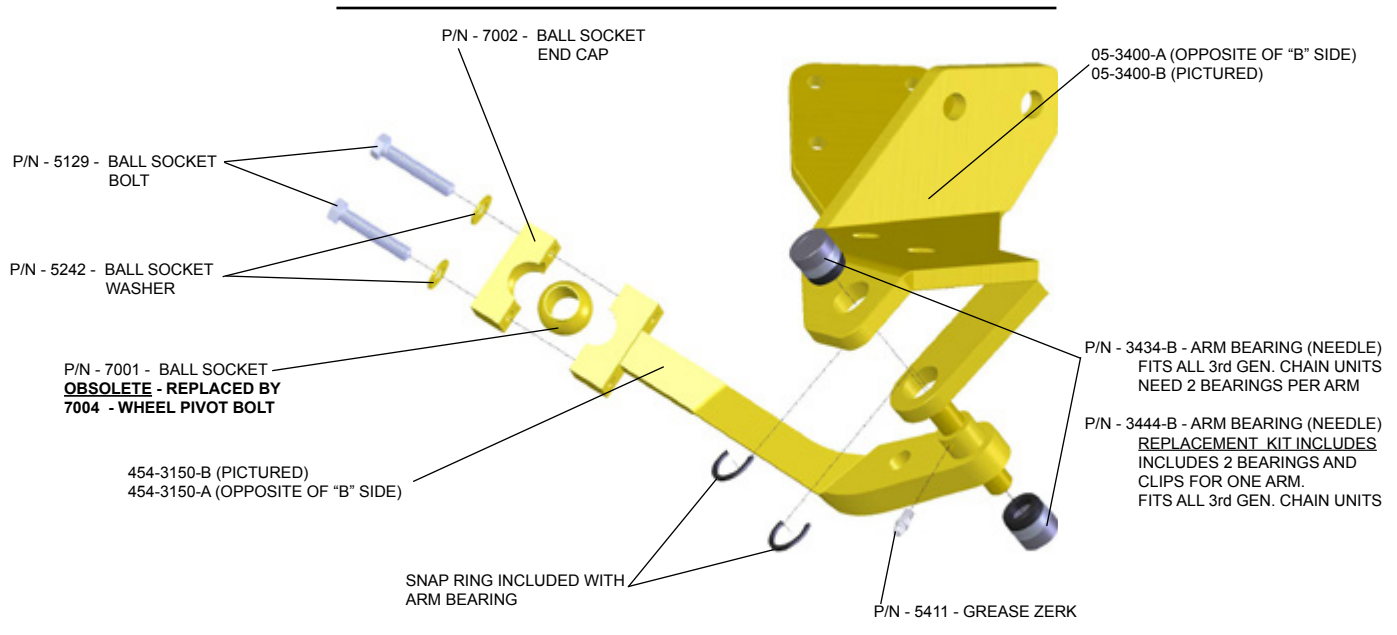
P/N 1037 - 02.08 AIR CYLINDER COMPLETE
INCLUDES STUD BOLT LOCK-NUTS &
CYLINDER BRACKET GASKET



P/N 42-8000 - CHAIN TRAY
USED FOR THE FOLLOWING
CHAIN UNITS: 04/14-6300, 06/16-6300,
08/18-6300, 42/62-6300, 48/68-6300

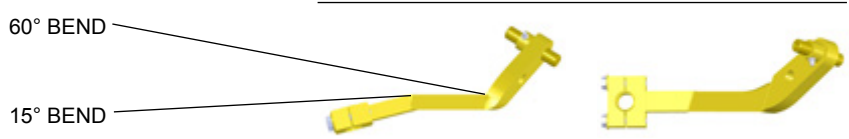
454-6350 CHAIN UNIT (LOW FLOOR BUS MODEL)

***NOTE - SOME OF THE CYLINDER BRACKETS AND ARMS LOOK SIMILAR, THE DIFFERENCES IN THESE LIE IN THE LENGTH OF THE BRACKET/ ARM AND THE POSITIONING AND THE ANGLE OF THE BEND/ BENDS IN THE THEM.**



05-3400-B (PICTURED)
05-3400-A (OPPOSITE OF "B" SIDE)

USED FOR THE FOLLOWING CHAIN UNITS:
05/15-6300, 05/15-7300, 454-6300, 454-7300, 75-6300



60° BEND
15° BEND

454-3150-A (OPPOSITE OF "B" SIDE)
454-3150-B (PICTURED)
BEND IN ARM: INNER BEND - 60° / OUTER BEND - 15°
USED FOR THE FOLLOWING CHAIN UNITS:
454-6350, 454-7350

454-6300 CHAIN UNITS ALSO USES THE FOLLOWING PARTS



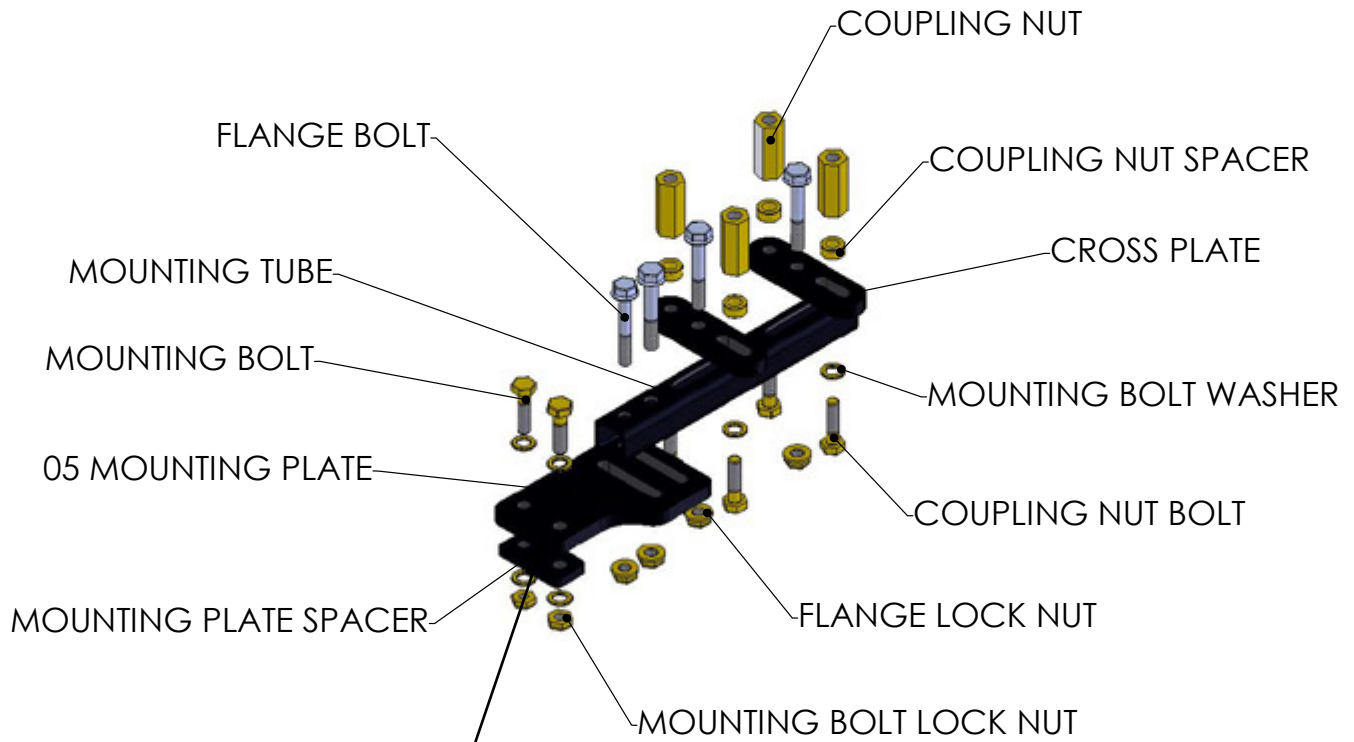
P/N 1005 - BALL JOINT
INCLUDES LOCK-NUT & LEFT-HANDED JAM NUT



P/N 1038 - 04, 05, 06 AIR CYLINDER COMPLETE
INCLUDES STUD BOLT LOCK-NUTS & CYLINDER BRACKET GASKET



P/N 05-8000 - 05 CHAIN TRAY
454-8000-B (SHOWN)
454-8000-A (OPPOSITE OF "B" SIDE)



04-2003 - 04 MOUNTING PLATE
FOR 04-2000 BRACKET

05-2003 - 05 MOUNTING PLATE
FOR 05-2000 BRACKET

04-2004 - 04 MOUNTING PLATE
W/ 4° BEND
FOR 04-2204 BRACKET

05-2004 - 05 MOUNTING PLATE
W/ 4° BEND
FOR 05-2204 BRACKET

04-2008 - 04 MOUNTING PLATE
W/ 8° BEND
FOR 04-2208 BRACKET

05-2008 - 05 MOUNTING PLATE
W/ 8° BEND
FOR 05-2208 BRACKET

04-2012 - 04 MOUNTING PLATE
W/ 4° BEND
FOR 04-2212 BRACKET

05-2012 - 05 MOUNTING PLATE
W/ 12° BEND
FOR 05-2212 BRACKET



2002 - UNIVERSAL MOUNTING TUBE

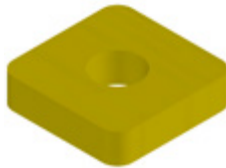


MOUNTING PLATE SPACERS

<u>P/N</u>	<u>DESCRIPTION</u>
1014-S	1/4" MTG PLATE SPACER
1012-S	1/2" MTG PLATE SPACER



2001 - UNIVERSAL CROSS PLATE



CROSS PLATE SPACERS

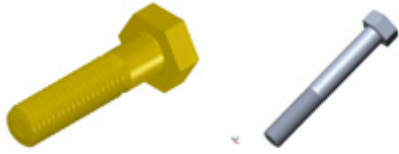
<u>P/N</u>	<u>DESCRIPTION</u>
2415	1/4" CROSS PLATE SPACER
2515	1/2" CROSS PLATE SPACER



COUPLING NUT SPACERS

<u>P/N</u>	<u>DESCRIPTION</u>
0625-FW	5/8" Flat Washer
6254-FW	1/4" Coupling Nut Spacer
1050-S	1/2" Coupling Nut Spacer
1075-S	3/4" Coupling Nut Spacer
1100-S	1" Coupling Nut Spacer

Combine Coupling Nut Spacers for larger Spacing needs, i.e. for a 1 7/8" Spacer combine a 1" + a 3/4" + a 5/8" Flat Washer (1/8" Spacer)



GRADE-8 BOLTS

ALL BOLTS ARE COARSE (UNC) THREADED UNLESS OTHERWISE STATED

<u>P/N</u>	<u>DESCRIPTION</u>
0150	5/8" x 1 1/2" (Coupling Nut Bolt)
0175	5/8" x 1 3/4" (Coupling Nut Bolt)
0200	5/8" x 2" (Coupling Nut Bolt)
0225	5/8" x 2 1/4" (Coupling Nut Bolt)
0250	5/8" x 2 1/2" (Coupling Nut Bolt)
0275	5/8" x 2 3/4" (Coupling Nut Bolt)
0300	5/8" x 3" (Coupling Nut Bolt)
0325	5/8" x 3 1/4" (Coupling Nut Bolt)
0350	5/8" x 3 1/2" (Coupling Nut Bolt)
0375	5/8" x 3 3/4" (Coupling Nut Bolt)
0400	5/8" x 4" (Coupling Nut Bolt)
0425	5/8" x 4 1/4"
0450	5/8" x 4 1/2"
0500	5/8" x 5"
0600	5/8" x 6"
0700	5/8" x 7"
0800	5/8" x 8"
0900	5/8" x 9"
10100	1" x 10" (Hanger Bolt)
1070	1"-14 x 7"
1220	1/2" x 2" - 20 BOLT
1225	1/2" x 2" (Set Screw)
1230	1/2"-13 x 3" (Set Screw)
1240	1/2" x 4" (Set Screw)
1250	1/2" x 5" (Set Screw)
1260	1/2"-13 x 6" (Set Screw)
13130	5/16" x 1" BOLT
1415-90	M16x1.5 - 90MM LONG GD 10.9
1615-40	M16x1.5 - 40MM LONG GD 10.9
1615-60	M16x1.5 - 65MM LONG GD 10.9
1615-70	M16x1.5 - 70MM LONG GD 10.9
16150	M16x1.5 - 150MM LONG GD 10.9
1620-40	M16x2.0 - 40MM LONG GD 10.9
1620-45	M16x2.0 - 45MM LONG GD 10.9
1620-50	M16x2.0 - 50MM LONG GD 10.9
1620-60	M16x2.0 - 60MM LONG GD 10.9
1620-65	M16x2.0 - 65MM LONG GD 10.9
1620-70	M16x2.0 - 70MM LONG GD 10.9
1620-80	M16x2.0 - 80MM LONG GD 10.9
1620-90	M16x2.0 - 90MM LONG GD 10.9
1620-100	M16x2.0 - 100MM LONG GD 10.9
1620-150	M16x2.0 - 150MM LONG GD 10.9



GRADE-8 NUTS

<u>P/N</u>	<u>DESCRIPTION</u>
0226	5/8" MOUNTING LOCK NUTS
1071	1" UNC LOCK NUT
1072	1" UNF LOCK NUT
1121-F	7/8"-14 UNF TOP-LOCK NUT
1122-F	1"-14 UNF TOP-LOCK NUT
1123-F	3/4"-16 UNF TOP-LOCK NUT
1213	1/2" x 13 LOCK NUT
1226	1/2" x 13 SET SCREW NUT
1255	1/2" x 20 UNF TOP LOCK NUT
1256	1/2" x 20 UNF LOCK NUT
1415-61	M14x1.5 GD 10.9 LOCK NUT
1620-61	M16x2.0 GD 10.9 LOCK NUT



COUPLING NUTS

<u>P/N</u>	<u>DESCRIPTION</u>
3410	3/4"-10 Coarse Coupling Nut (White)
3416	3/4"-16 Fine Coupling Nut (Green)
7809	7/8"-9 Coarse Coupling Nut (Black)
7814	7/8"-14 Fine Coupling Nut (Blue)
1014	1" - 14 Fine Coupling Nut (Red)
1125	1 1/8"-12 Fine Coupling Nut (Pink)
1815	18mm x 1.5 Coupling Nut (Orange/White)
2015	20mm x 1.5 Coupling Nut (Purple)
2025	20mm x 2.5 Coupling Nut (Silver)
2215	22mm x 1.5 Coupling Nut (Brown)
2225	22mm x 2.5 Coupling Nut (Yellow)
2420	24mm x 2.0 Coupling Nut (Orange)



GRADE-8 FLANGE BOLTS & NUTS

<u>P/N</u>	<u>DESCRIPTION</u>
2400	5/8"x 4" FLANGE BOLTS
0227	5/8" FLANGE LOCK-NUTS

INSTA-CHAIN QUICK REFERENCE PARTS APPLICATION GUIDE

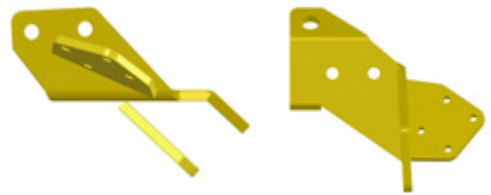
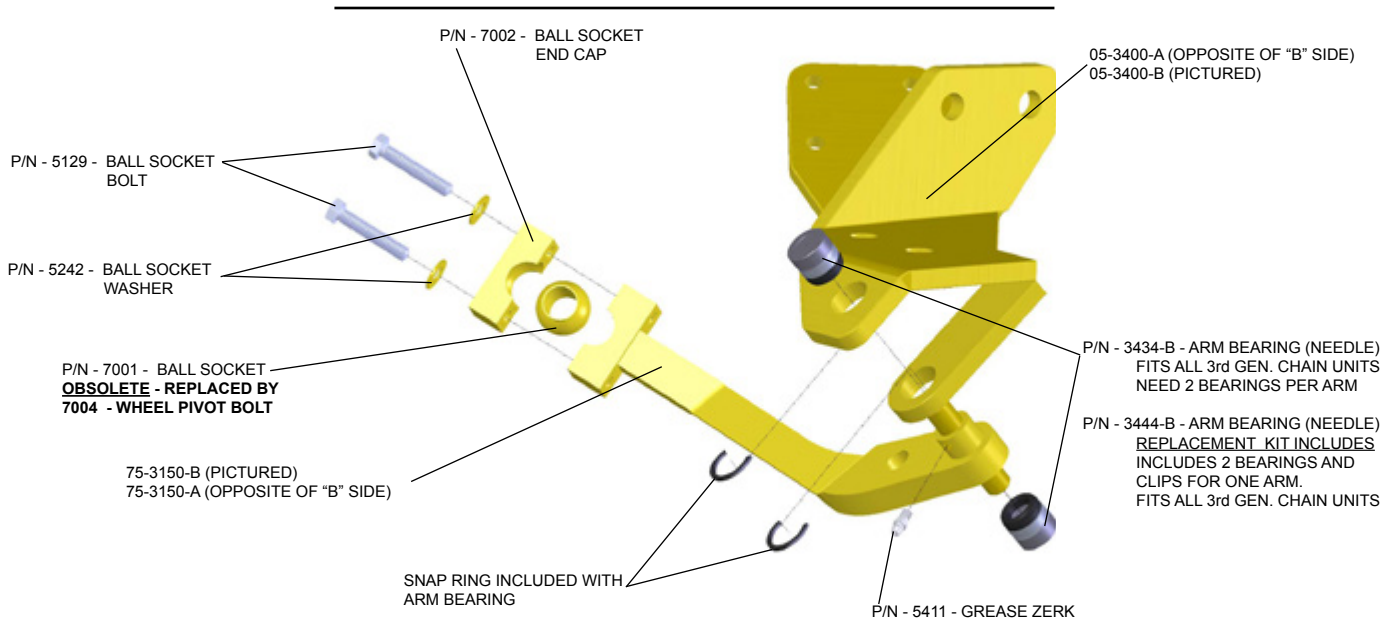
CHAIN UNIT	Cylinder Bracket	Bend Deg.	Arm	Length	Pivot-Bend	Bend Deg.	Bearing Kit	Air Cylinder
01-6300	01-3400-A/B	n/a	01-3100-A/B	12.75	4.75	45	3444-B	1037
11-6300	01-3400-A/B	n/a	11-3100-A/B	12.75	5.5	36	3444-B	1037
04/14-6300	04-3400-A/B	33	04/14-3100-A/B	18.5	8.5	27	3444-B	1038
05/15-6300	05-3400-A/B	43	05/15-3100-A/B	13.38	5	43	3444-B	1038
06/16-6300	06-3400-A/B	25	06/16-3100-A/B	18.75	8.5	27	3444-B	1038
08/18-6300	08-3400-A/B	33	04/14-3100-A/B	18.5	8.5	35	3444-B	1037
42/62-6300	02-3400-A/B	25	42/62-3100-A/B	14	8.25	27	3444-B	1037
48/68-6300	08-3400-A/B	33	48/68-3100-A/B	13.63	8.25	35	3444-B	1037
565-6300	565-3400-A/B	43	565-3100-A/B	12.5	3.5	47	3444-B	1038
65-6300	65-3400-A/B	47	65-3100-A/B	13	3.5	47	3444-B	1038
75-6300	75-3400-A/B	43	75-3100-A/B	11.5	3.5	43	3444-B	1038
85-6300	65-3400-A/B	41	85-3100-A/B	13	3.5	41	3444-B	1038
35-6300	05-3400-A/B	43	35-3100-A/B	13.38	3.5	53/10	3444-B	1038
45-6300	05-3400-A/B	43	45-3100-A/B	13.75	3.5	53/10	3444-B	1038
259-6300	059-3400-A/B	43	259-3100-A/B	11.5	3.5	55	3444-B	1038
359-6300	059-3400-A/B	43	35-3100-A/B	13.63	3.5	53/10	3444-B	1038
459-6300	059-3400-A/B	43	45-3100-A/B	13.75	3.5	53/10	3444-B	1038

Parts common to All

P/N	Description
1005	Ball Joint
5248	Diaphragm
0439	Clamp Kit, Air Cylinder
0435	Air Cylinder Lid
3444-B	Arm Bearing Kit, 2 Bearings, 2 Clips

75-6350 CHAIN UNIT

*NOTE - SOME OF THE CYLINDER BRACKETS AND ARMS LOOK SIMILAR, THE DIFFERENCES IN THESE LIE IN THE LENGTH OF THE BRACKET/ ARM AND THE POSITIONING AND THE ANGLE OF THE BEND/ BENDS IN THE THEM.



05-3400-B (PICTURED)
05-3100-A (OPPOSITE OF "B" SIDE)

USED FOR THE FOLLOWING CHAIN UNITS:
05/15-6300, 05/15-7300, 454-6300, 454-7300, 75-6300, 75-7300

43° BEND



75-3150-A (OPPOSITE OF "B" SIDE)
75-3150-B (PICTURED)

BEND IN ARM: BEND - 43°
USED FOR THE FOLLOWING CHAIN UNITS:
75-6350, 75-7350

75-6300 CHAIN UNITS ALSO USES THE FOLLOWING PARTS



P/N 1005 - BALL JOINT
INCLUDES LOCK-NUT & LEFT-HANDED JAM NUT



P/N 1038 - 04, 05, 06 AIR CYLINDER COMPLETE
INCLUDES STUD BOLT LOCK-NUTS & CYLINDER BRACKET GASKET



P/N 05-8000 - 05 CHAIN TRAY
75-8000-B (SHOWN)
75-8000-A (OPPOSITE OF "B" SIDE)

M.S. Foster & Associates, Inc.

1866 N. Country Lane

Michigan City, IN 46360

888.452.4053 | ph

219.879-9225 | ph

219.879-9313 | fax

www.msfooster.com

sales@msfooster.com

