



 **Rostra
Precision
Controls, Inc.**
Product Guide

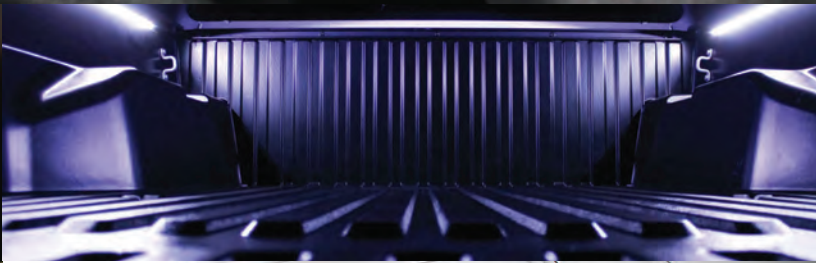


Table of Contents

About Rostra/Installer Notes	Page 2
Fleet Safety Equipment Additions	Page 3
Rearview Mirror Adapters	Page 4
Factory LCD Interface Cameras	Page 5
Vehicle Camera Systems	Page 7
Magna/RearSight® LCD Mirrors and Monitors	Page 7
3rd Brake Light Cameras	Page 9
Universal CCD and CMOS Color Cameras	Page 10
Tailgate-Handle Integrated Cameras	Page 11
Infinity RearSight Rearview Mirrors	Page 13
DashCam Dashboard Video Recording Cameras	Page 14
BackZone/FrontZone Parking Assistance Systems	Page 15
Con-Verse Hands-Free Bluetooth® Systems	Page 16
SoftTouch™ Navigation Systems	Page 17
ComfortHeat/ComfortSeat Seat Heaters & Lumbar Supports	Page 18
Drive-By-Wire Cruise Control Systems	Page 19
Global Cruise Universal Cruise Control System	Page 20
Interior/Exterior LED Lighting Assemblies	Page 21
Vehicle-Specific LED Daytime Running Light (DRL) Systems	Page 22
Universal LED Daytime Running Light (DRL) Systems	Page 23

In this issue...

Don't miss our new line of OE LCD interface cameras on page 5!

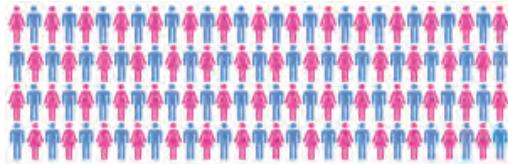


Pictured: 250-8407-PRO

About Rostra Precision Controls

Rostra, an ISO 9001/TS 16949 Certified company, in addition to supplying OEM components to some of the world's largest auto and truck component manufacturers, is also North America's single largest supplier of cruise controls and transmission products to the automotive aftermarket. We are continuously pioneering the development and marketing of innovative automotive accessories. Backed by nearly 150 years of experience in precision manufacturing, we have earned our reputation as an ideal partner throughout the automotive industry.

Fast Facts



At our Laurinburg, NC headquarters, Rostra currently maintains a staff of over 100 employees between our manufacturing and business development teams.



Our product validation facilities allow us to simulate extreme real-world conditions including tests for hot and cold temperatures, along with ingress protection (IP).



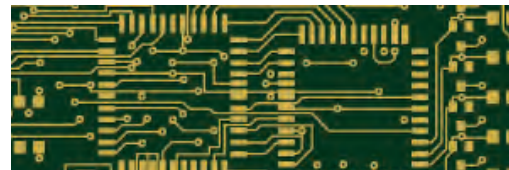
Our ability to scale production lines and add new products is largely due to our facility size. Our manufacturing plant measures over 80,000 square-feet.



Our shipping and receiving department is available for shipments Monday-Friday from 9:00 AM until 4:00 PM. Six loading docks allow for easy loading and unloading.



Maintaining on-site technical support means you get answers to complicated questions quickly and from technicians that helped develop the products you install.



Rapid prototyping allows us to create new products per customer specifications at an incredibly fast pace with very little delay between product design and shipping.

Our Specialities

- Universal and vehicle-specific electronic cruise control systems.
- Vehicle rear obstacle sensing and parking assist systems.
- Universal backup camera systems with CCD or CMOS cameras.
- Transmission solenoids, automotive sensors and controls, vacuum modulators, and transmission wire harnesses.
- Comfort products including lumbar supports and seat heaters.

Design, Engineering, and Prototyping

Our innovative *Design and Engineering Department* works with virtually all phases of the manufacturing process, right up through customer technical support. This hands-on approach allows us to respond to the changing demands of the marketplace.

Our sophisticated *Prototype Department* has an expert staff, working with today's most advanced equipment. They can bring a product from concept into full reality in astonishingly little time.

We make sure that every single product undergoes the most rigorous durability testing. When a product passes our test, you can be sure it's the best. Our testing facilities include:

- Thermo-Shock Chamber
- Environmental Chamber
- Hydraulic and Air Tests
- Force Displacement
- Dust Chamber
- Salt Spray Chamber
- Vibration Analysis
- Life Cycle Testing

In addition to supplying U.S. customers from our North Carolina plant, we currently export to: Australia, Belgium, Brazil, Canada, China, Denmark, Finland, France, Germany, Holland, Israel, Japan, Korea, Malaysia, Mexico, New Zealand, Norway, South Africa, Sweden, Switzerland, Turkey and the United Kingdom.

Installer Notes

The information in this manual has been carefully compiled through actual vehicle testing and manufacturers service manual research, and to the best of our ability is accurate. However, we do not warrant the accuracy of this information against changes in vehicle design, the use or misuse of this information, or typographical errors. It is the responsibility of the installer to verify the signal and color on the wire attachments prior to and after the installation of the accessory to assure proper operation of the accessory and the vehicle through a road test. We do not accept any responsibility for damage to the vehicle or injury to its occupants caused by the use of this information. Connection of incorrect wires could cause accessory or vehicle malfunctions and component damage. These conditions can cause a major risk while driving for you, your passengers and other motorists, exposing all of you to the risk of accident and injury.



250-8211 Monitor Specifications

- | | |
|----------------------------|--------------------------------|
| 5-inch LCD monitor | Includes pedestal mount |
| 480 x 272 resolution | Auto day/night dimming |
| Matte finish reduces glare | Adjustable brightness/contrast |
| Dual video inputs | Built-in speakers for audio |



250-8213 Monitor Specifications

- | | |
|----------------------------|--------------------------------|
| 5-inch LCD monitor | Includes stem/pedestal mounts |
| 480 x 272 resolution | Auto day/night dimming |
| Matte finish reduces glare | Adjustable brightness/contrast |
| Dual video inputs | Built-in speakers for audio |



250-8212 Monitor Specifications

- | | |
|----------------------------|--------------------------------|
| 7-inch LCD monitor | Includes pedestal mount |
| 800 x 480 resolution | Auto day/night dimming |
| Matte finish reduces glare | Adjustable brightness/contrast |
| Quad video inputs | Built-in speakers for audio |



250-8214 Monitor Specifications

- | | |
|----------------------------|--------------------------------|
| 7-inch LCD monitor | Includes stem/pedestal mounts |
| 800 x 480 resolution | Auto day/night dimming |
| Matte finish reduces glare | Adjustable brightness/contrast |
| Quad video inputs | Built-in speakers for audio |



250-8148-10M and 250-8148-20M Camera Specifications

- | | |
|-------------------------|---------------------------------|
| Super CMOS sensor | 10 or 20 meter harnesses |
| 580 TV Lines resolution | .1 Lux daytime illumination |
| 170-degree wide view | 0 Lux night vision illumination |
| Threaded connectors | Built-in microphone for audio |



250-8149-10M and 250-8149-20M Camera Specifications

- | | |
|-------------------------|---------------------------------|
| 1/4" CCD image sensor | 10 or 20 meter harnesses |
| 420 TV Lines resolution | .1 Lux daytime illumination |
| 130-degree wide view | 0 Lux night vision illumination |
| Threaded connectors | Built-in microphone for audio |

New For 2015 - Rear View Mirror Mount Adapters

Adapt a vehicle's original equipment rearview mirror mount to accommodate any of Rostra's RearSight® LCD-equipped rearview mirrors or monitors with one of our custom mirror stem adapters. Please visit rostra.com for a complete application listing and updates.

250-8604



Multiple Dodge/Mercedes/Smart applications

250-8605



Multiple Volkswagen/Audi applications

250-8606



Volkswagen Passat (2012-2014)

250-8608



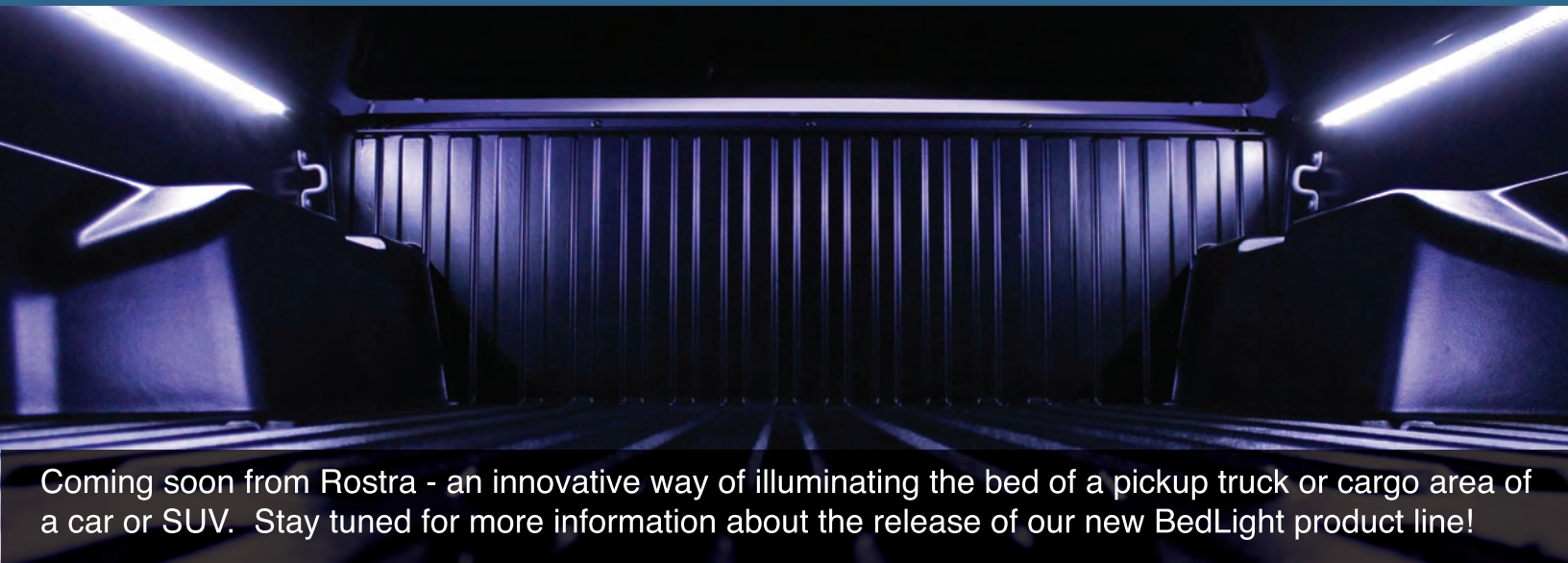
Multiple Dodge/Ram/Chrysler applications

250-8609



Multiple Honda/Scion/Subaru applications

New For 2015 - BedLights LED Truck Bed Lighting



Coming soon from Rostra - an innovative way of illuminating the bed of a pickup truck or cargo area of a car or SUV. Stay tuned for more information about the release of our new BedLight product line!

BedLight

Factory LCD Screen Interface Cameras



250-8407-PRO 2014+ Ram ProMaster Uconnect 5.0 screen interface camera system.

250-8407-W (most 2014+ Chrysler/Jeep/Dodge)

250-8408-W (most 2011-2014 Chrysler/Jeep/Dodge)



Wedge camera system for 5" and 8.4" Radios.

Wedge camera system for MyGig Radios.

250-8409-W (most 2011-2014 Chrysler/Jeep/Dodge)

250-8415-W (most 2013-2014 Mazda vehicles)



Wedge camera system for CTP, RE4, RE2 Radios.

Wedge camera system for factory 5.8" LCD screens.

250-8413 (most 2012-2015 MyFord Touch)

250-8414 (most 2013-2015 GM IntelliLink/MyLink/CUE)



Base Camera Installation System for MyFord Touch. Add any RCA-equipped camera to factory 8" screens.

Base Camera Installation System for GM vehicles. Add any RCA-equipped camera to factory 4.2" & 8" screens.

Factory LCD Screen Interface Cameras

Please visit rostra.com for a complete application listing and updates.

Chevrolet

Year	Model	Part Number	Camera	DAR	Notes
2007-2011	Avalanche	250-8039	CMOS	Yes	Requires factory navigation radio.
2014	Impala *	250-8414-W	CMOS	No	Requires factory 8" touch screen with <i>MyLink</i> system.
2007-2011	Silverado	250-8569-NAV	CMOS	Yes	Requires factory navigation radio.
2014-2015	Silverado *	250-8414-LC	CMOS	No	Requires factory 4.2" or 8" screen with <i>MyLink</i> or <i>IntelliLink</i> .
2007-2011	Suburban	250-8039	CMOS	Yes	Requires factory navigation radio.
2015	Suburban *	250-8414-W	CMOS	No	Requires factory 8" screen with <i>MyLink</i> .
2007-2011	Tahoe	250-8039	CMOS	Yes	Requires factory navigation radio.
2015	Tahoe *	250-8414-W	CMOS	No	Requires factory 8" screen with <i>MyLink</i> .

Dodge

Year	Model	Part Number	Camera	DAR	Notes
2011-2014	Charger	250-8409-W	CMOS	Yes	Requires 8.4" screen (CTP, RE4, RE2).
2011-2013	Durango	250-8408-W	CMOS	Yes	Requires <i>MyGIG</i> radio (RHR, RHP, RHB, RHZ).
2014	Durango	250-8407-W	CMOS	Yes	Requires factory 5" or 8.4" screen.
2011-2014	Grand Caravan	250-8408-W	CMOS	Yes	Requires <i>MyGIG</i> radio (RER, REZ, REW, RHB, RBZ).
2011-2014	Journey	250-8409-W	CMOS	Yes	Requires 8.4" screen (CTP, RE4, RE2).

Ford

Year	Model	Part Number	Camera	DAR	Notes
2013-2015	C-Max	250-8413-W	CMOS	No	Requires factory 8" <i>MyFord Touch</i> screen.
2011-2015	Edge	250-8413-W	CMOS	No	Requires factory 8" <i>MyFord Touch</i> screen.
2013-2015	Escape	250-8413-W	CMOS	No	Requires factory 8" <i>MyFord Touch</i> screen.
2011-2015	Explorer	250-8413-W	CMOS	No	Requires factory 8" <i>MyFord Touch</i> screen.
2011-2015	Flex	250-8413-W	CMOS	No	Requires factory 8" <i>MyFord Touch</i> screen.
2013-2015	Focus	250-8413-W	CMOS	No	Requires factory 8" <i>MyFord Touch</i> screen.
2013-2015	Fusion	250-8413-W	CMOS	No	Requires factory 8" <i>MyFord Touch</i> screen.
2013-2015	F-150/250/350	250-8413-LC	CMOS	No	Requires factory 8" <i>MyFord Touch</i> screen.
2011-2015	Taurus	250-8413-W	CMOS	No	Requires factory 8" <i>MyFord Touch</i> screen.

Ram Trucks

Year	Model	Part Number	Camera	DAR	Notes
2014	ProMaster	250-8407-PRO	CMOS	Yes	Requires factory 5" touch screen (Uconnect 5.0)
2013-2015	Ram Truck	250-8407-LC	CMOS	Yes	For use with 5" and 8.4" touch screens.
2013-2015	Ram Truck	250-8407-LC-C	CMOS	Yes	For use with 5" and 8.4" touch screens. Chrome handle.
2009-2012	Ram Truck	250-8408-LC	CMOS	Yes	Requires <i>MyGIG</i> Multimedia System.
2009-2012	Ram Truck	250-8408-LC-C	CMOS	Yes	Requires <i>MyGIG</i> Multimedia System. Chrome handle.
2009-2013	Durango	250-8407-W	CMOS	Yes	Requires <i>MyGIG</i> Multimedia System.

Scion

Year	Model	Part Number	Camera	DAR	Notes
2013-2014	FR-S	250-8410	CMOS	No	Requires OE 6.1" touch screen.
2013	xB	250-8410	CMOS	No	Requires OE 6.1" touch screen.

Subaru

Year	Model	Part Number	Camera	DAR	Notes
2013-2014	BRZ	250-8410	CMOS	No	Requires OE 6.1" touch screen.

DAR = Dealer Activation Required

* Vehicle cannot be equipped with factory rear-seat entertainment or be prewired for factory rear-seat entertainment with Blue-ray player and motorized screen.



Backup Camera Systems

Today's drivers are more safety conscious than ever. With the popularity of SUVs, trucks and larger vehicles, blindspot areas behind and beside the vehicle are an increasing problem. Sophisticated video technology now makes it affordable for drivers to have an added dimension of safety. A RearSight® Automotive Rear View Backup Camera System makes backing up easier and less prone to accidents. Nearly every kind of vehicle can benefit from a RearSight Camera System. And with the many systems and options Rostra offers, RearSight® is sure to be one of the most desirable safety products in the aftermarket.



250-8208

Mirror Specifications

- 4.3-inch TFT LCD monitor.
- LCD dims automatically.
- 400 x 234 resolution.
- 16:9 aspect ratio.
- Anti-glare coated glass.
- Two video inputs.
- Reverse override.
- Adjustable LCD brightness.



250-8072

Mirror Specifications

- 4.3-inch TFT LCD monitor.
- 480 x 272 resolution.
- Anti-glare coated glass.
- Two video inputs.
- Reverse trigger override.
- Selectable parking gridlines.
- Adjustable brightness
- Adjustable contrast.



250-8209

Mirror Specifications

- 4.3-inch TFT LCD monitor.
- LCD dims automatically.
- 400 x 234 resolution.
- 16:9 aspect ratio.
- Anti-glare coated glass.
- Two video inputs.
- Reverse override.
- Trilobe stem for Dodge vehicles.



250-8210

Mirror Specifications

- 4.3-inch TFT LCD monitor.
- LCD dims automatically.
- 400 x 234 resolution.
- 16:9 aspect ratio.
- Anti-glare coated glass.
- Two video inputs.
- Reverse override.
- Trilobe stem for Ford vehicles.



250-8800

Mirror Specifications

3.5-inch TFT LCD display. High resolution display.
4:3 aspect ratio OEM approved.
Auto-dimming mirror glass.



250-8801

For General Motors vehicles

Mirror Specifications

3.5-inch TFT LCD display. High resolution display.
4:3 aspect ratio OEM approved.
Auto-dimming mirror glass. Compass/Temp. readout. *
Available with universal wire harness and temperature probe as part number 250-8801TP.



250-8802

For General Motors vehicles

Mirror Specifications

3.5-inch TFT LCD display. High resolution display.
4:3 aspect ratio OEM approved.
Auto-dimming mirror glass. Built-in OnStar™ controls. **



250-8803

For General Motors vehicles

Mirror Specifications

3.5-inch TFT LCD display. High resolution display.
4:3 aspect ratio Compass/Temp. readout. *
Auto-dimming mirror glass. Built-in OnStar™ controls. **



250-8804

Mirror Specifications

3.5-inch TFT LCD display. High resolution display.
16:9 aspect ratio OEM approved.
Auto-dimming mirror glass. Slimline design for car/SUV.

Mirror Stem Mount Adapters Available

Adapt a vehicle's original equipment rearview mirror mount to accommodate any of Rostra's RearSight® LCD-equipped rearview mirrors.



250-8604

Multiple Dodge/Mercedes/Smart



250-8605

Multiple Volkswagen/Aud



250-8606

Volkswagen Passat (2012-2014)



250-8608

Multiple Dodge/Ram/Chrysler applications



250-8609

Multiple Honda/Scion/Subaru applications

* Requires factory temperature sensor for plug-n-play installation. Temperatureprobe and harness available for universal applications.

** Requires OnStar hardware and service for operation.

Sentry Pro-Grade Heavy-Duty Fleet Safety Equipment



250-8118

Monitor Specifications

- 4.3-inch LCD monitor.
- 480x272 resolution
- Matte finish reduces glare.
- Four video inputs.
- Includes stem/dash mounts.
- Adjustable brightness/contrast.
- Touch-based controls.
- Selectable parking grid lines.



250-8143-A

Camera Specifications

- 1/3-inch CMOS color camera.
- 0 Lux light sensitivity.
- 24-LED infrared ring.
- 33' harness included.
- Versatile mounting options.
- Includes RCA adapters.
- Mounting hardware included.

3rd Brake Light Integrated Infrared Cameras

3rd brake light cameras provide some of the most popular fleet vehicles in the automotive industry with an innovative way of overcoming their notorious blindspots. Now available for Dodge and Mercedes Sprinter vans, Chevrolet Express and GMC Savana vans, the Nissan NV, and new Ram ProMaster, Rostra's line of 3rd brake light cameras add the safety benefits of a rear vision system while retaining the original brake lamp functionality.

3rd Brake Light Camera Features (applies to 250-8144, 250-8145, 250-8146, 250-8148)

- IP67-IP68 Water Proof
- Super CMOS Image Sensor
- 170-degree Viewing Angle
- Built-in Microphone

- 648 x 488 Effective Pixels
- 480 Resolution (TV Lines)
- Extension Harness Included
- 0 Lux with Infrared Night Vision



250-8144

2007-2014 Dodge/Mercedes Sprinter



250-8145

2004-2013 Chevrolet/GMC Express/Savana



250-8146

2012-2014 Nissan NV (all trim levels)



250-8148-10M and 250-8148-20M

Universal mount 33' and 66' harness kits



250-8407-PRO

- ProMaster camera adapter
- 1/4-inch CMOS camera
- 160-degree view
- .5 Lux light sensitivity
- Overlaid parking gridlines
- Waterproof case
- Anti-fog lens
- Includes hardware



250-8082A

Camera Specifications

1/4-inch CMOS camera. Includes tab/hinge mounts.
 160-degree view. Overlaid parking gridlines
 .5 Lux light sensitivity. Waterproof case/anti-fog lens.
 Standard S-Video plugs. Includes 30-foot harness.
 Includes RCA adapter.



250-8083A

Camera Specifications

1/4-inch CMOS camera. Flush-mounts to flat surface.
 160-degree view. Overlaid parking gridlines
 .5 Lux light sensitivity. Waterproof case/anti-fog lens.
 Standard S-Video plugs. Includes 30-foot harness.
 Includes RCA adapter.



250-8092A

Camera Specifications

1/4-inch CMOS camera. Built-in license plate bracket.
 160-degree view. Can mount behind license plate.
 .5 Lux light sensitivity. Waterproof case/anti-fog lens.
 Includes RCA adapter. Includes all mounting hardware.
 Includes 30-foot harness.



250-8105A

Camera Specifications

1/4-inch CCD camera. Includes tailgate handle shroud.
 160-degree view. Drill-in style for flush mounting.
 .5 Lux light sensitivity. Waterproof case/anti-fog lens.
 Includes RCA adapter.
 Includes 30-foot harness.



250-8112A

Camera Specifications

1/4-inch CCD camera. 'Teardrop' mount for liftgates.
 160-degree view. Includes license plate bracket.
 .5 Lux light sensitivity. Includes tailgate handle shroud.
 Includes RCA adapter. Waterproof case/anti-fog lens.
 Includes 30-foot harness.



250-8147

Camera Specifications

1/4-inch CMOS camera. Overlaid parking gridlines.
 160-degree view. Drill-in style for flush mounting.
 .5 Lux light sensitivity. Lip or tailgate mountable.
 RCA video plugs. Waterproof case/anti-fog lens.
 30-foot harness length. Includes all mounting hardware.

CCD color camera with 1/4-inch lens.
 150-degree peripheral view.
 .5 Lux light sensitivity.
 Standard RCA video connections.
 Includes manually adjustable lens hood.
 Includes swiveled hinge mount.

Infrared LED ring provides night vision.
 Includes 49-foot extensions harness.
 Built-in microphone for in-cab audio.
 IP 68 weatherproof rating.
 Available in white and black.

250-8110A
 White

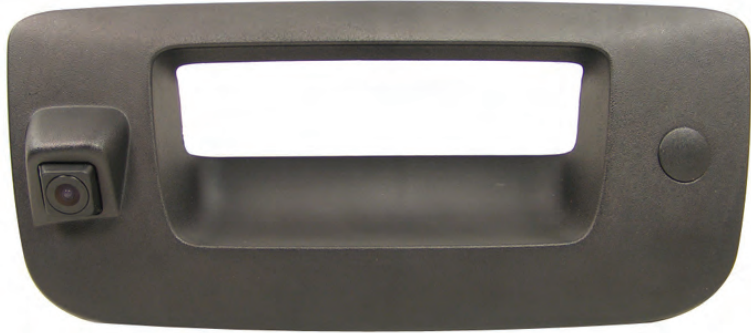
250-8110ABLK
 Black



Tailgate-Handle Integrated Backup Cameras

Rostra's complete line of tailgate handle integrated cameras provides a unique way of adding a backup camera system to many of the most popular pickup trucks on the road. Each tailgate handle is available with either a CCD or CMOS camera, and each CMOS camera comes equipped with selectable parking gridlines that can be turn on or off depending upon your preference. As always, every tailgate handle camera offered by Rostra includes a 30-foot extensions harness, weatherproof plugs, universal RCA connectors, and our industry-leading 3-year/36,000 mile warranty.

2007-2013 * Chevrolet Silverado and GMC Sierra



250-8569

1/4-inch CMOS camera. .5 Lux light sensitivity.
160-degree view. Standard S-Video plugs.



250-8618 Chrome/CMOS version

Includes RCA adapter. Waterproof case/anti-fog lens.
Overlaid parking gridlines. Includes 30-foot harness.

2010-2015 Dodge Ram Trucks



250-8586

CCD version CMOS version
1/4-inch CMOS camera. .5 Lux light sensitivity.
160-degree view. Standard S-Video plugs.

250-8601

Includes RCA adapter. Waterproof case/anti-fog lens.
Overlaid parking gridlines. Includes 30-foot harness.

250-8614 Chrome/CMOS version

Includes RCA adapter. Waterproof case/anti-fog lens.
Overlaid parking gridlines. Includes 30-foot harness.



2004-2014 Ford F-Series (See application notes below)



250-8595

CCD version CMOS version
1/4-inch CMOS camera. .5 Lux light sensitivity.
160-degree view. Standard S-Video plugs.
2004-2014 F150 ** 2008-2014 F250/F350/450/550 **

250-8600

Includes RCA adapter. Waterproof case/anti-fog lens.
Overlaid parking gridlines. Includes 30-foot harness.

250-8612 Chrome/CMOS version

Includes RCA adapter. Waterproof case/anti-fog lens.
Overlaid parking gridlines. Includes 30-foot harness.



* Also fits 2014 HD model Silverado and Sierra

** Not for use with Heritage model trucks.



Tailgate Camera Systems

2005-2015 Toyota Tacoma



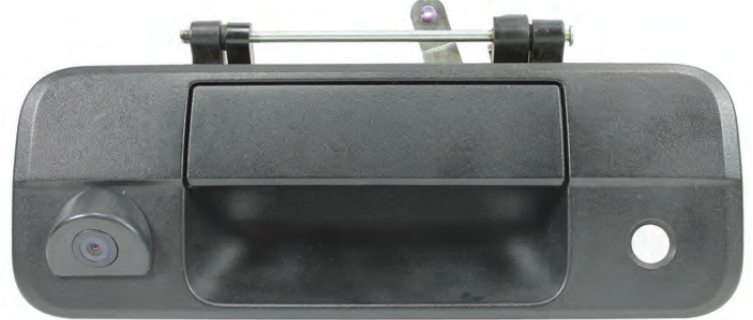
250-8610

CMOS version
1/4-inch camera.
160-degree view.
.5 Lux light sensitivity.

250-8616

Chrome/CMOS version
Includes RCA adapter.
Waterproof case/anti-fog lens.
Includes 30-foot harness.

2007-2013 Toyota Tundra



250-8587

CCD version
1/4-inch camera.
160-degree view.
.5 Lux light sensitivity.

250-8599

CMOS version
Includes RCA adapter.
Waterproof case/anti-fog lens.
Includes 30-foot harness.

2014+ Chevrolet Silverado & GMC Sierra

NEW



250-8622

1/4-inch CMOS color camera.
150-degree wide angle lens view.
.5 Lux light sensitivity for low-light.

RCA adapter included (camera works with any monitor)
Waterproof case and anti-fog lens for extended life
30-foot extension harness included has enough length for any truck.

Infinity RearSight Infinite Glass Rearview Mirrors

Introducing Infinity RearSight®, Rostra's all-new line of deluxe rearview mirror systems. With Infinity mirrors, you'll see things in a whole new way. With their edge-to-edge mirror glass, the rearview mirror no longer stands out from the windshield, but blends seamlessly into the forward-facing environment - all while providing extra depth and enhanced visibility over a traditional mirror.



250-8704 Infinity Prismatic. Edge-to-edge mirror glass. Manual dimming.



250-8705 Infinity Electrochromic Edge-to-edge glass. Auto-dimming.



250-8706 Infinity Electrochromic Edge-to-edge glass. Auto-dimming. Compass.



250-8709 Infinity Electrochromic Edge-to-edge glass. Auto-dimming. Compass. Built-in HomeLink® controls.

HomeLink® is a registered trademark of Gentex Corporation

Introducing DashCam - a series of compact, fully-featured digital video capture systems that use a standard Class 10 SD or microSD card for storage and record on-road video while you drive. The DashCam recording units and their associated accessories are specifically designed with mobility in mind. Their compact form factor means they blend seamlessly into most vehicle dashboards and windshields while providing easy access to their many features including video playback, starting and stopping recordings, and turning audio capture on or off. The software suite included with each Dashboard Video Recording System provides a sophisticated means of extracting video to a personal computer for editing, as well as providing access to many other features including overlaying GPS coordinates onto a Google Map to view driving patterns, and viewing telemetry data such as in-car G-forces experienced while driving.



250-8918

DashCam Specifications

- 1-Channel video recording with front-facing camera.
- Front camera: 105-degree, 1080p video resolution.
- Built-in 2.5-inch LCD screen for video playback.
- Navigate video settings built-in user interface.
- Automatically records with ignition power.
- Microphone and speaker for audio recording/playback.
- IR remote control included.



250-8919

DashCam Specifications

- 2-Channel video recording with dual cameras
- Front camera: 120-degree, 720p video resolution
- Interior camera: 170-degree, VGA video resolution
- Interior camera includes infrared LEDs for night vision
- Solid-mount and suction cup mounts included.
- Records GPS location for route mapping (Google Maps)
- Automatically records with ignition power
- Microphone and speaker for audio recording/playback

250-8919HD

NEW



- Same feature set as part number 250-8919.
- SD card security panel with security screws.
- Includes hard-wired mini USB power supply.

- 8GB Class 10 microSD card included for recording video.
- IR remote and video-out cable available separately.



250-1903-BZP



250-1920-FZ



The BackZone Plus and FrontZone are revolutionary automotive reverse parking assist systems developed by Rostra Precision Controls and designed to give every driver peace-of-mind while parking their vehicle in cramped quarters. The BackZone Plus and FrontZone units provide both visual and audible alerts to the potential dangers of nearby obstacles through the use of an included buzzer built into a digital display that can be mounted on your sun visor or dashboard.

Included in every BackZone Plus and FrontZone ultrasonic parking assist system, you will find four bumper-mountable ultrasonic sensors with additional 6-degree and 12-degree angled bezels added to accommodate curved bumpers (see photos). Likewise, each kit includes four rubber sleeves to be used to reduce sensor vibration when mounting the ultrasonic sensors in steel bumpers. These sensors provide information to the main control module via the vehicle-length wiring harness, also included. The sensors included with each BackZone Plus arrive with a flat-black finish that can be painted to match the vehicle's exterior *.

BackZone Plus and FrontZone Advantages

Safer Parking Decision



Make safer parking decisions by using an automotive parking assist to alert you to obstacles nearing your vehicle while parking.

Ultrasonic Detection



BackZone Plus and FrontZone's ultrasonic-based technology means consistency on targets of all densities with fewer false alarms.

Paintable Bumper Sensors



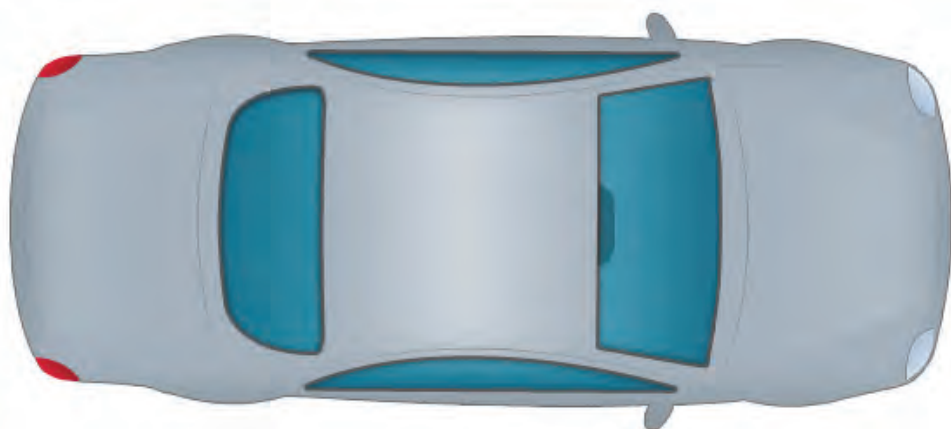
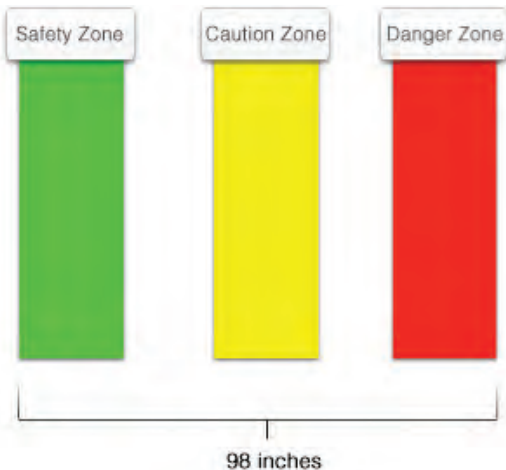
The flat black sensors included with each BackZone Plus or FrontZone kit can be painted to match the factory fit and finish of your car!

Audible Alarm



The audible alarm included in each automotive parking assist kit provides a unique way of alerting drivers to nearby unseen obstacles.

BackZone Plus and FrontZone Detection Zones





Good driving requires two hands! Rostra Precision Controls is proud to offer an innovative product that is going to change the way you use your cellular phone while driving. The Con-Verse Automotive Bluetooth® Hands-Free System allows you to keep both hands on the wheel while driving, keeping you alert and aware of your surroundings, ready to react without any distractions.

Customized Bluetooth® kits include factory look-alike switches designed to fit directly into the knock-out plugs currently on your vehicle's dashboard. They allow you to retain your automobile's factory finish, all while adding the benefits of a hands-free, voice-activated calling system and include wiring harnesses designed to tie directly into your vehicle's radio.



Con-Verse Bluetooth® module

Plug and Play



Custom-fit and vehicle-specific wiring harnesses included in every Bluetooth® kit makes for quick and easy installations normally involving no cutting or splicing of existing vehicle wiring.

Full Duplex DSP



Full Duplex Digital Signal Processing of audio by every Bluetooth® system means you are assured the very best sound quality throughout every phone call or every streamed song.

Multi-Pairing



Utilizing the internal memory in every Bluetooth® module allows for the memorization of up to 5 different cellular phones! Extra phones can be added in just a few short steps, if needed.

Rapid Call Transfer



Phone calls already in progress are transferred between the Bluetooth® module and your cell phone seamlessly when your vehicle's ignition is turned on or off.

Volume Control



With the single-button volume control built into every Bluetooth® control switch, the audio playing over your vehicle's speakers is centralized, easy to find and easy to use.

Incoming Call Rejection



Got a call coming in that you don't want to take? Built into our control switches and modules is the functionality to reject a call, transferring it safely to your voicemail.

Upgradeable Software



Software upgradeability within the Bluetooth® module means that as the Bluetooth® standard grows within the cellular phone industry, your Con-Verse by Rostra system will be able to keep pace.

Multiple Switch Options



Rostra offers a variety of switches to be connected to your Bluetooth® system allowing you to keep the original fit and finish of your vehicle's interior. See above for images.



250-7503
3rd Gen Toyota

250-7504
Nissan

250-7505
Honda

250-7565
Mazda

250-7566
Subaru

250-7526
Universal

SoftTouch™ Navigation Interface Systems

Adding a navigation system to your General Motors, Toyota, or Ford vehicle has never been easier than with the SoftTouch Navigation Interface System from Rostra Precision Controls, Inc. Designed to be used with GM's MyLink system, Ford's MyFord Touch, and Toyota vehicles equipped with a factory 6.1-inch touch screen, a SoftTouch navigation system provides a way of adding a seamless navigation interface to your vehicle without the hassle or cost of dealership re-programming, or the danger of software and firmware re-flashing. Please visit www.rostra.com to view all products and vehicle-specific applications.

250-7610

Multiple General Motors vehicles.



250-7613

Multiple Toyota applications



250-7616

2013-2014 Toyota RAV4 *



250-7614

Multiple 2012-2015 Ford vehicles



250-7615

Multiple 2012-2015 Ford vehicles



250-7618/250-7619

Honda Accord/Crosstour/Odyssey applications

ComfortHeat/ComfortSeat Seat Heaters and Lumbar Support

Demand is heating up! Experience the gentle, therapeutic warmth of a Rostra ComfortHeat automotive carbon-fiber seat heating system with dual-zone heating for soothing lower back pain and adding car seat comfort that works with cloth or leather vehicle seats. The therapeutic seat heater is fast-heating providing warmth in less than a minute. Treat yourself to the ultimate in comfort by installing both the ComfortSeat Lumbar Support and therapeutic ComfortHeat heated seats in your vehicle today!

ComfortHeat Seat Heating Features (applies to all)

Feel heat in less than a minute with rapid heat-up.
 Easy-to-locate LED backlit control switches.
 Control switches designed to match factory interiors.
 Includes all wiring and connectors for installation.
 FMVSS 302 material burn resistance compliant.
 Wires protected by thick insulating material.

Two-wire installation (12V ignition power and ground).
 Locking harness ends ensure stable wire connections.
 Includes modifiable 10" x 19" heating elements.
 Element temperatures range from 91°F to 127°F.
 Elements controlled individually with built-in thermostat.
 Elements held in place with heat-resistant adhesive.



250-1871



250-1872



250-1870



ComfortHeat

Cruise in comfort! With the ComfortSeat Lumbar Support System, you can set the amount of lower back muscle support you need for your individual comfort while driving. Tucked away inside the driver or passenger seat, the Lumbar Support System provides the precise amount of extra lumbar support to your lower back, decreasing lumbar strain at your command. With just the touch of a finger, the seat or console-mounted switch activates a pneumatic motor filling the bladder within the seat. Make every drive a comfortable drive.

ComfortSeat Lumbar FAQ

How long does it take to install the Automotive Lumbar Support?

The Lumbar Support has universal application and is easy to install. Estimated installation time is approximately 1 hour or less.

Will I need to remove the seat?

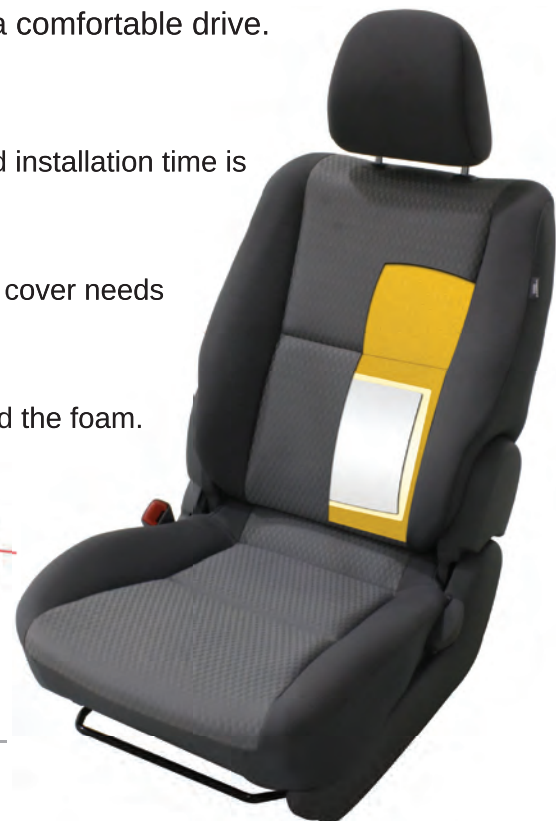
No. The Lumbar Support can be installed without removing the seat. The seat cover needs only to be pulled up, not removed.

What is the difference between a "front mount" and a "rear mount"?

A "front mount" fits between the foam and upholstery. A "rear mount" fits behind the foam.



Electric pump with pouch. Lumbar air bladder. Control switch. Wiring harness



Part Numbers

250-1453
Front-mount support

250-1454
Rear-mount support

250-1752
Toyota lumbar support

Drive-By-Wire Cruise Control Systems

Drive-by-wire add-on cruise control systems by Rostra are available for many popular vehicle platforms from manufacturers like Toyota/Scion, General Motors, Suzuki, Dodge, Mitsubishi and Chrysler. Each cruise control system is designed with ease of installation in mind and more often than not consists of hardware meant to be completely plug-and-play.

What is included with a Rostra cruise control system?

A typical add-on cruise control system by Rostra includes an intelligent electronic control module with a built-in firmware package designed to deliver specific commands to a vehicle's onboard computer system or accelerator pedal position sensor. When combined with the fashionable control switch, an accelerator pedal interface harness, and primary system power harness, Rostra's cruise control systems provide a carefree way of maintaining highway driving speeds.

Popular Applications for 2015



250-9610
Ford
2011-2015 Fiesta



250-9612
Ford
2014-2015 Transit Connect
1.6L engine only



250-9613/250-9614
Chevrolet/GMC
2011-2015 Cruze (A/T or M/T)
2015 Colorado/Canyon (A/T or M/T)



250-1836
Toyota
Multiple 2006-2015 vehicles



250-9604
Nissan
2007-2015 Sentra



250-9633
Mitsubishi
2014-2015 Mirage

View our complete list of electronic cruise controls at www.rostra.com!

Coming soon...



In 2015, our electronic cruise control systems take a giant leap forward with the addition of our latest control switch allowing you to access the expanded potential of Rostra's cruise control modules. Stay tuned for more details!

Set your speed with a touch of your finger! Once selected your cruise control constantly measures changes in the engine loading and vehicle speed in order to maintain a constant speed on the highway. Easily set the controls and avoid unintended speeding. Slow down or accelerate, you don't have to touch the pedal. Use your RF switch and have that same functionality built right into your steering wheel!



Improved Operation

- Set Speed
- Coast/Reduce Speed
- Resume/ Accel
- Tap-Up, 1 MPH per tap
- Tap-Down, 1 MPH per tap
- Controlled Resume Rate

Enhanced Features

- Modular Design
- Wiring Harness with Lock
- Redesigned Water Sealing
- Self Diagnostics
- Smaller Module

Enhanced Adaptability

- Works with 3, 4, 5, 6 or 8 Cylinders
- Select Square or Sine Wave Speed Signal Source
- Select Acceleration Rate
- Select Gain Control
- Select M/T or A/T

Easier Installation

- No Vacuum Required
- No Clutch Switch Needed
- VSS Wire Already in Harness
- Compatible with Neutral Safety
- Compatible with Direct Fire Ignition

250-1223 (Universal)

Designed to work with any vehicle incorporating the use of a mechanically-operated throttle, a Rostra Universal Cruise offers a great deal of flexibility when it comes to adding a cruise control system to your vehicle. Whether you're restoring a classic hot-rod, prepping the family minivan for holiday traveling or looking to save on the cost of fuel for your motorhome, a universal cruise control from Rostra is the only way to go!

Universal and Vehicle-Specific Cruise Control Switches



250-3020
Early GM-style lever (1981 and earlier).



250-3021
Early Ford-style lever (1983 and earlier).



250-3026
GM/AMC switch with dimmer.



250-3126
GM-style chrome switch w/out wiper delay (1984-1996).



250-3032
"Cut Off" installs over existing turn signal lever shaft.



250-3125
Universal mount with adjustable arm.



250-3304
"Stubby" universal mount with non-adjustable arm.



250-3421
"Slim Arm" universal left-hand mount with adjustable arm.



250-3446
"Slim Arm" universal right-hand mount with adjustable arm.



250-3742
Universal left-hand mount with On/Off LED.



250-3743
Universal right-hand mount with On/Off LED.



250-3002
"Piggy Back" installs on existing lever.



250-3592
Dash mount switch with engaged LED.



250-3593
Dash mount switch without engaged LED.



250-1483
Universal bottom mount RF with bracket.

CiteLite



Introducing CiteLites, a unique new way of illuminating your vehicle's interior. With their high-power LEDs, CiteLites provide improved visibility over classic halogen lighting during low-light conditions, and can be powered either by the same wiring that illuminates your other interior lighting, or pow two different lighting color temperatures - a warm light to match your current interior lighting, or a cool, white light for extra clarity. Contact your regional sales manager, or visit rostra.com to learn more!

CiteLite LED assembly and headliner bezel



CiteLite Part Numbers and Descriptions

- 260-1029** One set (2 lights) warm CiteLites.
- 260-1030** One set (2 lights) cool CiteLites.
- 260-1035** One CiteLite, warm.
- 260-1030** One CiteLite, cool.

Introducing StarLights by Rostra

Introducing Rostra's all-new 260-1034 StarLight LED Lighting System - a first-of-its-kind universal solution for adding a series of ultra-bright LED lights to a vehicle's interior or exterior. With ease of installation in mind, we've developed an amazingly versatile lighting system that leverages the efficiency of LED lights in a package designed to provide more illumination than traditional halogen lighting assemblies.



260-1024-JEEP

2007-2015 Jeep Wrangler (JK)



Two 5-LED lamps
Two black custom bezels
Fender cut-out templates
All mounting hardware
Black interior finish
Weatherproof connectors
Intensive illumination
4800K color temperature

260-1004-FJ2

2007-2014 Toyota FJ Cruiser



Two 5-LED lamps
Two custom bezels
H11 and H8 halogens *
All mounting hardware
Chrome interior finish
Weatherproof connectors
4800K color temperature
* Available without halogen lamps as part number **250-1024-FJ1**

260-1024-CAMSE

2012-2014.5 Toyota Camry SE



Two 5-LED lamps
Two black custom bezels
All mounting hardware
Black interior finish
Weatherproof connectors
4800K color temperature

260-1026-CAMLE

2012-2014.5 Toyota Camry LE



Two 6-LED lamps
Two black custom bezels
All mounting hardware
Chrome interior finish
Weatherproof connectors
4800K color temperature

260-1020-CRUZ

2012-2014 Chevrolet Cruze



Two 5-LED lamps
Two black custom bezels
All mounting hardware
Black interior finish
Weatherproof connectors
4800K color temperature



View our complete list of vehicle-specific DRL systems at rostra.com!

LED Daytime Running Light Systems (Universal)

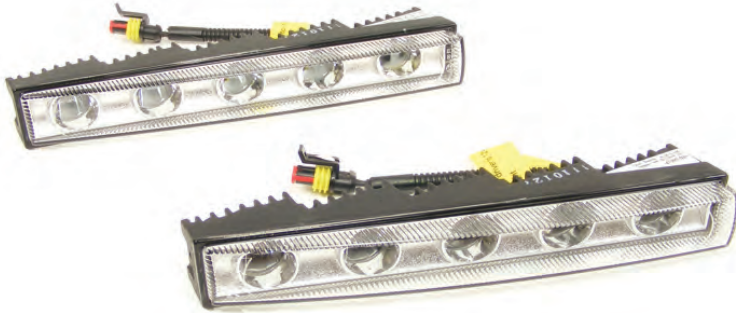
Be seen! With an all-new, high-powered LED aftermarket automotive Daytime Running Light system by Rostra, you're sure to get noticed! Every unit includes a color-matched set of LED lamps to ensure uniform color. Trim bezels and bracketry are also included to ensure secure fitment presenting an OEM finish to your vehicle. Each DRL assembly is powered by a waterproof ballast module that ensures clean, stable voltage to the LED lamp allowing each LED to reach their maximum lifetime potential.

DRL Features

Available with 4 and 5-LED ultra-bright lamps
Chrome interior finish enhances look of vehicle
1-Watt LED's provide intensive illumination
Pulse-Width Modulated ballast included
Wire harness lengths cover all application

Glass and aluminum superior build construction
LED's built for maximized lifespan
Weatherproof ballast module for stable power
Weatherproof plugs protect against corrosion
Every kit includes all mounting hardware *

260-1000-UNI



5-LED lamp, chrome interior finish, 211mm x 33mm

260-1002-UNI



4-LED lamp, chrome interior finish, 140mm x 30mm

260-1004-UNI-M



5-LED lamp, chrome interior finish, 200mm x 20mm

260-1006-UNI



4-LED lamp, chrome interior finish, 228mm x 20mm

260-1008-UNI



5-LED lamp, chrome interior finish, 199mm x 20mm

260-1012-UNI



1-LED lamp, chrome interior finish, 70mm x 70mm

* Mounting hardware not included



LCD-Equipped Mirror/Monitors

	250-8072	250-8208	250-8209	250-8210	250-8800	250-8801	250-8802	250-8803	250-8804
250-8082A	250-8081	250-8309			250-8800-CMOS	250-8801-CMOS *	250-8802-CMOS	250-8803-CMOS *	250-8804-CMOS
250-8083A	250-8081B	250-8309-B							250-8804-BULCAM
250-8092A	250-8081-LPB	250-8309-LPB			250-8800-LPB	250-8801-LPB *	250-8802-LPB	250-8803-LPB *	250-8804-LPB
250-8094	250-8081-TNT								
250-8097A	250-8081-SHUT								
250-8098A	250-8081-ULTRA								
250-8105A	250-8070				250-8800-CCD	250-8801-CCD *	250-8802-CCD	250-8803-CCD *	250-8804-CCD
250-8110A		250-8309-IR							
250-8112A	250-8070		250-8209-LIP	250-8210-LIP	250-8800-CCD	250-8801-CCD *	250-8802-CCD	250-8803-CCD *	250-8804-CCD
250-8117A		250-8308							
250-8147		250-8309-W	250-8209-W	250-8210-W					
250-8569		250-8308-GM-LCH						250-8803-LCH *	
250-8586					250-8800-RM-LCH		250-8802-LCH		
250-8587					250-8800-TN-LCH				
250-8595					250-8800-FD-LCH				
250-8599		250-8308-TN-LCH							
250-8600		250-8308-FD-LCH							
250-8601		250-8308-RM-LCH	250-8209-RM-LCH						

CCD and CMOS Color Cameras

Note: Any camera listed in the left-hand column above will connect to any mirror/monitor listed along the top row above.

* Add "TP" to the end of the part number to also receive a universal temperature probe to use this kit on any vehicle.