

# GL1000

## WALK BEHIND LASER GUIDE STRIPING SYSTEM

**ELIMINATES STRING LINE AND CHALK LINES**  
**FASTER AND STRAIGHTER • ONE MAN OPERATION**



*"These have done nothing but help our quality and speed up our striping operation. We are very pleased with this product"*

*Jason Goad  
Advanced Workzone Services - OK*

*"Since we installed the laser we are NO longer using string line or chalking lines. This has greatly reduced the amount of labor and has improved our finished product."*

*Chad Jung  
Superior Striping - MN*

**VERSATILE • ACCURATE • EASY TO USE**



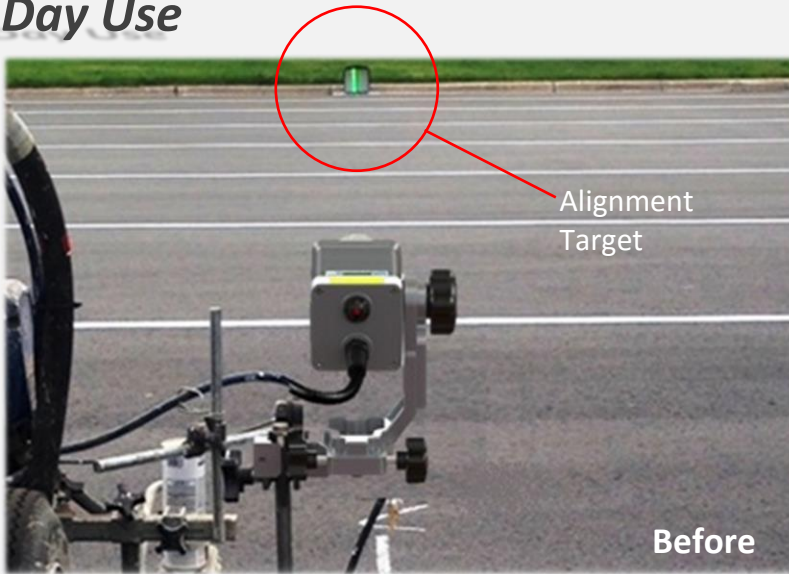
# FINALLY- A Laser Guide System for Walk Behind Stripers!

The GL1000 was specifically designed for walk behind line striping machines. This new method is a game changer in the parking lot striping industry; It eliminates pulling string lines and chalk lines. Plus, it's faster, straighter and easy to use.

## ***NO more string line and chalk lines!***

- ✓ One man layout
- ✓ Increases your productivity (Restripes and new jobs)
- ✓ Better quality work (Makes anyone look like a pro)
- ✓ Works great day or night
- ✓ Faster • Straighter • Easy to Use

### ***Day Use***



- 1 Set alignment target over far point (Up to 700 feet)
- 2 Get spray nozzle w/ laser over near point
- 3 Start striping while keeping laser in center of alignment target

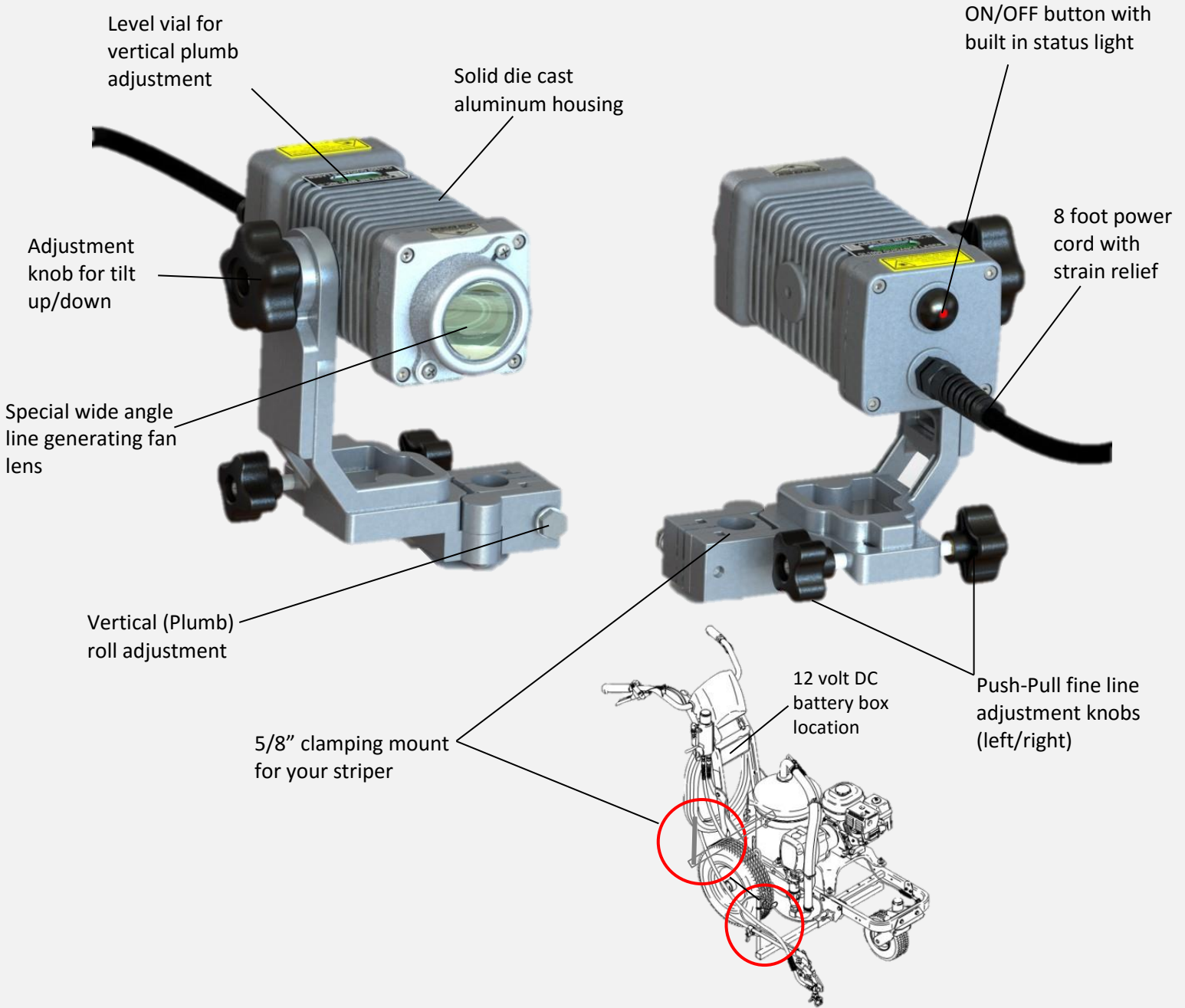
### ***Night Use***

- Visible on the ground as far as you can see
- Just connect the dots - The laser is your string line
- **Optional:** Use alignment target for long distance lines and hit your marks flawlessly



# MECHANICAL FEATURES

- OSHA Compliant, meets ALL Federal and International standards
- 5/8" mounting to adapt to virtually ALL walk behinds
- Compact and durable



**If you are pulling string lines, this is what you will save every month and every year!**

String Line Costs Per Hour	\$20	\$22	\$24	\$26	\$28	\$30	\$32	\$34	\$36	\$38	\$40	\$42	\$44	\$46	\$48	\$50
Per Month (21 Work Days)	\$3,360	\$3,696	\$4,032	\$4,368	\$4,704	\$5,040	\$5,376	\$5,712	\$6,048	\$6,384	\$6,720	\$7,056	\$7,392	\$7,728	\$8,064	\$8,400
Per Year (252 Work Days)	\$40,320	\$44,352	\$48,384	\$52,416	\$56,498	\$60,480	\$64,512	\$68,544	\$72,576	\$76,608	\$80,640	\$84,672	\$88,704	\$92,736	\$96,768	\$100,800



# GL1000 Specifications

**“Built To Work Where You Work”**

## Laser

- Laser Wavelength 510-532nm
- Laser Power: 4.75mW
- U.S.A: ‘Class IIIa’ in the U.S. under US FDA/CDRH 21 CFR, part I, Subchapter J, sections 1040.10 and 1040.11
- International: ‘Class 3R’ under:
  - ‘EN/IEC 60825-1 2014 edition 3’ (E.U.),
  - ‘BS EN 60825-1:2014’ (UK)
  - ‘AS/NZS 60825-1:2011’ (Australia/New Zealand)
  - & other countries, including: Japan, Korea, China, Singapore, Israel, South Africa, and more.
- U.S.A OSHA compliant: Meets all Federal and International standards
- Operational Life: 20,000 hrs. MTBF

## Environment

- Operating Temperature: -40°F to 122°F (-40° to 50°C)
- Enclosure Rating: Outdoor dust and water rated to IP65
- Vibration compliant per MIL-STD-810F method 5145 and truck assurance level 2, schedule E

## Electronic

- Power Source: 12 or 24 volt DC
- Power Draw: 0.1 of 1 amp at 12vdc, 0.05 of 1 amp at 24vdc
- Reverse Polarity and Spike Protected
- Over Temperature Protection Circuit
- Automatic Power Control: (APC) Keeps laser power stabilized through ambient temperature changes

## Mechanical

- Special wide angle line generating fan lens
- Rugged die cast aluminum housing
- Built in level vial to assure laser plane (line) is plumb
- Universal clamp with built-in fine line adjust
- Built in adjust knob for aiming left/right – up/down and swivel for adjusting fan (line) beam
- Waterproof ON/OFF button with built in power indicator light
- Heavy duty power cord with strain relief
- Dimensions: 6.0”length x 2.5”width x 2.5”height  
(15.24cm) (6.35cm) (6.35cm)
- Weight: 2.30 lbs.

**Warranty: 24 Months Parts and Labor**



## ACCESSORIES

**Battery Kit : P/N 3003-0800-1**  
(Consist of the following)

**12v 5amp Hr. Sealed Lead Acid Portable Battery:**  
Will operate GL1000 for approx. 50 hours.

**Battery Float Charger:**

Trickle charge for lead acid batteries that automatically shuts off when battery is fully charged. Reverse polarity protected.

**Hard Plastic Battery Case:**

Enclosed weather proof plastic box, ON/OFF power button with status light, built in charging port and dual connectors. *(Includes mounting hardware)*

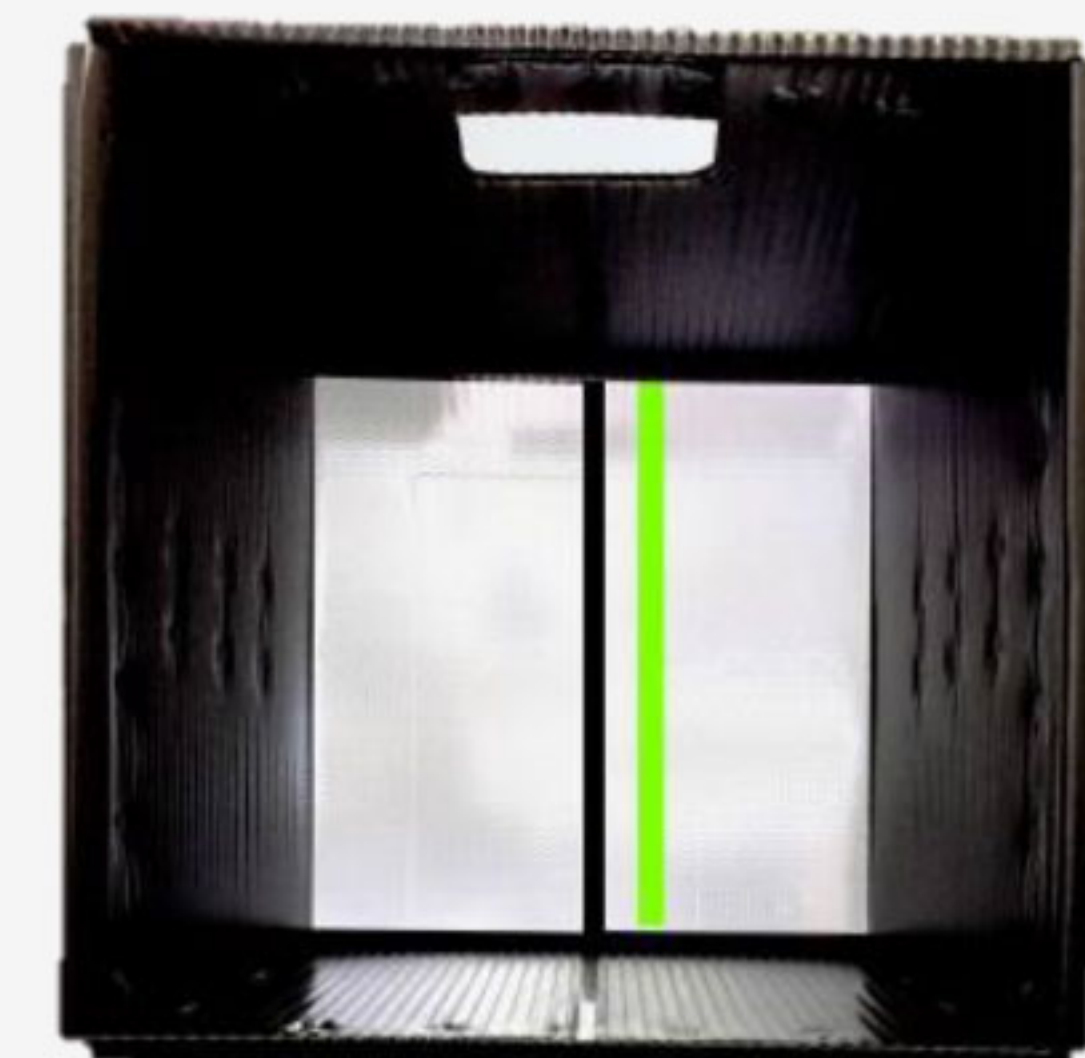


*\*Powers GL1000 and GL1700 simultaneously*



**Reflective Alignment Target: P/N 3003-0070**

Reflective Alignment Target with reinforced steel rim and grab handle.



**12” Extension w/ Collar: P/N 3003-0027**

Allows you to raise the laser as high as 36” for increased visibility on the alignment target.



**MADE IN REDMOND OREGON**

**Pat. Pending**

1866 N. COUNTRY LANE  
MICHIGAN CITY, IN 46360

SALES@MSFOSTER.COM  
WWW.MSFOSTER.COM

1-888-452-4053



**MS Foster**