

GL3000P REMOTE CONTROL GUIDANCE LASER

The GL3000P Guidance Laser uses an ultra-high visibility green laser to establish visual line control

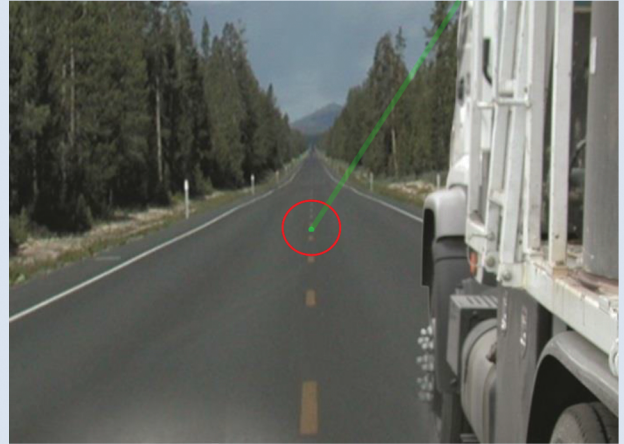


HIGHWAY PAINT
STRIPING

WATER BLASTER
TRUCKS

OR

VIRTUALLY ANY
APPLICATION
REQUIRING
VEHICLE LINE
CONTROL



THE SYSTEM

The driver can adjust the laser spot to the desired reference point on the road surface using the remote control panel located in the cab of the vehicle. The laser spot is impacted directly on the road surface approx. 30 feet ahead, showing the driver-operator exactly where the vehicle is relative to "on line." The laser spot is on the road ahead of the operator so that the reference is in the driving field of view instead of a T.V. screen or boom pointer.

THE PRODUCT

- Main housing is waterproof, purged and dry nitrogen filled, contains optic plate mounting platform, microprocessor electronics, laser, laser mounting assembly, laser driver board, automatic cooling-heating system, X&Y positioning control mechanism, driver motors and optics.
- 25 feet of interconnect cable with a waterproof mil spec in line connector mounted between the laser main housing and the control panel mounted in the cab.
- Control Panel allows the operator to turn the unit on and off as well as aim the laser toward or away from the vehicle as well as left and right from inside the cab.
- 15 feet of 12 or 24 Volt DC cable running from the control box for connection to vehicles 12 or 24 V power.

THE ADVANTAGES

It's more versatile, easier, faster and SAFER!

- You are looking in your natural driving field of view at the reference point.
- You can reduce or eliminate pre-marking and the high cost associated with it.
- Eliminates using a boom and the problems associated with it such as bouncing on rough surfaces, safety and the mechanical size and constraint of the mechanism.
- **SAFER!** Paint up to intersections without the worry of injury or damage to people or other vehicles caused by a mechanical arm extending out in front of the truck.
- Eliminates having to drive looking at a T.V. screen instead of the road. Reduces or eliminates the problem of "white-out" in low sun conditions.
- Greatly increases the machines maneuverability.
- You can move your reference on the fly from the cab – aim the laser spot further out, closer in, left or right.

SPECIFICATIONS

Laser: 532nm Class IIIa Green Laser
Power: 12 or 24 Volt DC Positive or Negative Ground
Power Draw: 4.00 Amps (Maximum Operating), 0.03 Amps (Sleep Mode)
Laser Housing
Height: 7"-1/8
Length: 11"-3/4
Housing Width: 6"-1/4
Base Width: 10"

12 Month Warranty
Parts and Labor

Cable length from laser housing to control box: 25'

12-24 Volt Power cable length from control box: 15'

Shipping Weight: 25lbs.

Enclosure Rating: Waterproof IP68



CONTACT US

1-888-452-4053

1040 HIGHWAY 212
MICHIGAN CITY, IN 46360

SALES@MSFOSTER.COM
WWW.MSFOSTER.COM



MS Foster