

Voyager®

7" Three Camera LCD Observation Monitor

A0M713



PRODUCT FEATURES:

- 7" Wide Format, Heavy Duty Color LCD Panel
- Energy Efficient White LED Backlight
- Aspect Ratio: 16:9
- Camera Inputs: 3
- Contrast Ratio: 300:1
- Brightness: 500 NIT
- View Angles (V/H): 100/120
- Anti-glare/Anti-scratch protective lens
- Integrated audio speaker
- NTSC and PAL video signal compatible
- Manual (pushbutton) or automatic (trigger) source selection
- Turn-signal (pulsed DC) compatible trigger inputs (AV2, AV3)
- Auto power on (standby)
- Auto Day/Night brightness modes
- On Screen Display (OSD) for AV source, picture adjustment and volume level
- Non-volatile memory for picture and volume adjustment settings
- Removable sun-visor included
- Multiple mounting options (AMPS compatible)



MS FOSTER

SERVING THE TRANSPORTATION INDUSTRY

CONTACT US

1-888-452-4053

1040 HIGHWAY 212
MICHIGAN CITY, IN 46360

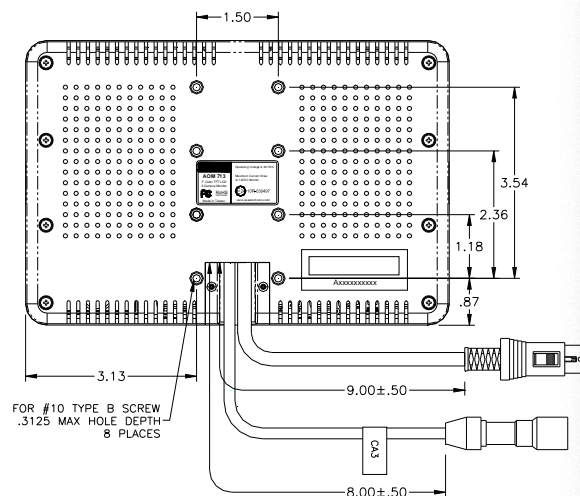
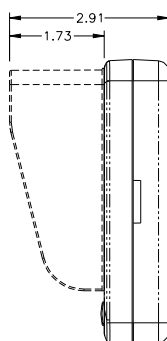
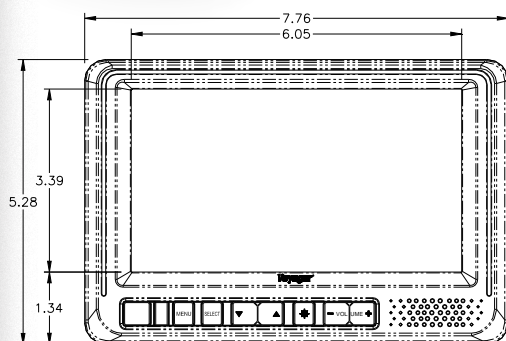
SALES@MSFOSTER.COM
WWW.MSFOSTER.COM

EXPAND your vision™

Voyager®

7" Three Camera LCD Observation Monitor

AOM713



General Specifications:

Power System		12VDC
Operating Voltage Range		9V ~ 30V
Current Draw @ 12V	Idle	90mA
	Nominal	500mA
	Maximum	850mA
Operating Temperature Range		-4°F to 149°F -20°C to 65°C
Storage Temperature Range		-40°F to 176°F -35°C to 80°C
Maximum Relative Humidity		85%
Overall Dimensions (inches)		7.75(W) x 5.25(H) x 1.25(D)
Product Weight (unpacked)		1.43 lbs

Performance Specifications:

Video / Display System			NTSC/PAL
Video Input Signal (Composite)			1V P-P @ 75Ω
Audio Output			1W
LCD Specifications	Diagonal Size		7"
	Resolution		480 x 234
	Brightness		450 nit
	Contrast Ratio		400:1
	View Angles	Top	55°
		Bottom	65°
		Left	70°
		Right	70°
	Display Format (aspect ratio)		Analog 16:9
	Response Time	Rise	15ms
		Fall	20ms
Backlight Type		LED	
Backlight Life (min)		20,000 Hours	