

# Voyager®

Color CMOS IR LED Camera

## VCMS140IB



### PRODUCT FEATURES:

- High performance color optics
- Waterproof (IP69K)
- Impact resistant aluminum housing
- Compact size
- IR low light assist
- Microphone
- Surface mount
- CMOS technology
- Corrosion Resistant (ASTM B117)
- Available in white (VCMS140I)
- Tested to ES0013 environmental standards



**M. S. Foster & Associates**

1040 HIGHWAY 212, MICHIGAN CITY, IN 46360  
Phone 219-879-9225 • Toll Free 888-452-4053  
Fax 219-879-9313 • email: [sales@msfoster.com](mailto:sales@msfoster.com)  
[www.msfooster.com](http://www.msfooster.com)

EXPAND your vision™

# Voyager<sup>®</sup>

Color CMOS IR LED Camera

## VCMS140IB



### PRODUCT FEATURES:

- High performance color optics
- Waterproof (IP69K)
- Impact resistant aluminum housing
- Compact size
- IR low light assist
- Microphone
- Surface mount
- CMOS technology
- Corrosion Resistant (ASTM B117)
- Available in white (VCMS140I)
- Tested to ES0013 environmental standards



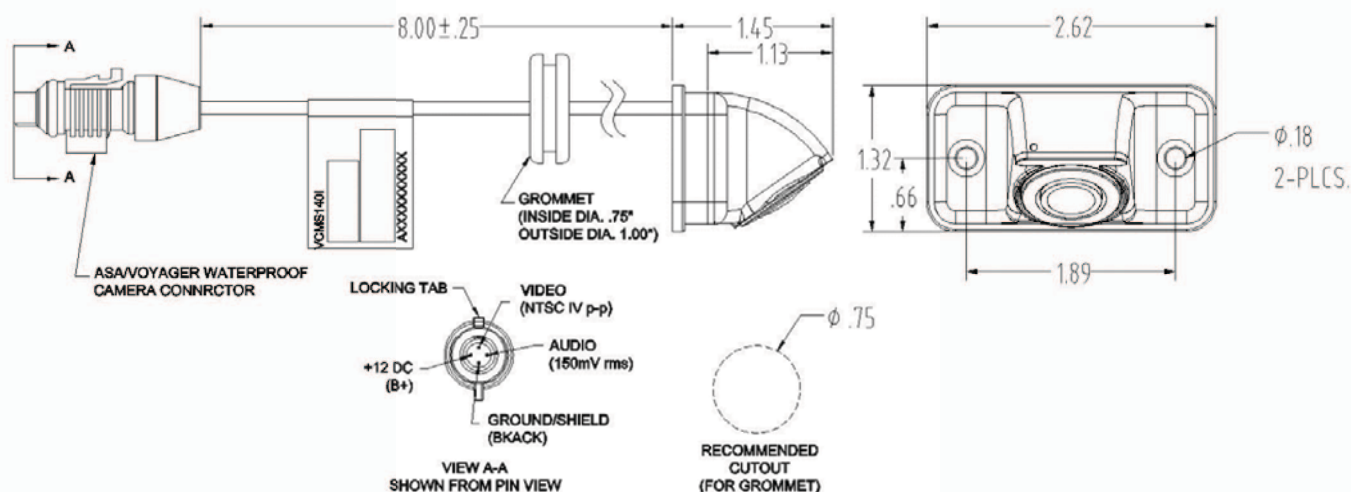
**M. S. Foster & Associates**

1866 N. Country Lane, Michigan City, IN 46360  
Phone 219-879-9225 • Toll Free 888-452-4053  
Fax 219-879-9313 • email: [sales@msfoster.com](mailto:sales@msfoster.com)  
[www.msfooster.com](http://www.msfooster.com)

EXPAND your vision<sup>™</sup>

# Voyager<sup>®</sup>

## Color CMOS IR LED Camera VCMS140IB



### Specifications: Test Spec ES-0001

#### General Specifications:

|                                      |                       |                       |
|--------------------------------------|-----------------------|-----------------------|
| Power System                         | 12VDC                 |                       |
| Operating Voltage Range              | 9V – 15VDC            |                       |
| Power Consumption                    | 150mA                 |                       |
| Operating Temperature Range          | -4°F to 149°F         | -20°C to 65°C         |
| Storage Temperature Range            | -22°F to 158°F        | -30°C to 70°C         |
| Operating Relative Humidity          | 100% RH               |                       |
| Waterproof Rating                    | IP69K                 |                       |
| Overall Dimensions (without bracket) | 2.62" x 1.13" x 1.32" | 66.6 x 28.7 x 33.6 mm |
| Product Weight (unpackaged)          | 2 oz                  | 57 g                  |

#### Optical Specifications

|                            |                   |                      |      |
|----------------------------|-------------------|----------------------|------|
| Video Output Signal Format |                   | NTSC                 |      |
| Video Signal Output Level  |                   | 1.0V p-p ; 75Ω       |      |
| CMOS Specifications        | Sensor            | 1/4" CMOS            |      |
|                            | Iris/Shutter Type | Electronic Automatic |      |
|                            | Shutter speed     | 1/60 s ~ 12 μs       |      |
|                            | Resolution        | 400 TV Lines         |      |
|                            | Sensitivity       | 0 Lux                |      |
|                            | Image Orientation | Mirror               |      |
|                            | View Angles       | D                    | 150° |
|                            |                   | H                    | 120° |
|                            |                   | V                    | 90°  |