

PRODUCT LINE CATALOG



Distributed By:



MS FOSTER

SERVING THE TRANSPORTATION INDUSTRY



VER-MAC®

VER-MAC.COM



Ver-Mac is a leading manufacturer of portable traffic safety, lighting, and security equipment. We also develop innovative software solutions for remote fleet management and smart work zones. Our products help make work zones safer for workers and drivers throughout North America and worldwide.

Founded over 60 years ago, Ver-Mac is a 3rd generation family-operated business. Today, over 350 employees contribute to our success every day in our Quebec, Canada and Conroe, Texas plants. Production is vertically integrated, which allows us to ensure outstanding quality, and enables better control over our delivery schedule.

Our focus on Customer Experience helps make sure that you have the support you need from the first time you reach out to select equipment until you look to replace that equipment, years down the road.



• CANADIAN PLANT



• AMERICAN PLANT



OUR MISSION



VER-MAC CREATES INNOVATIVE WORK ZONE SAFETY SOLUTIONS BY GENERATING AND SHARING REAL TIME INFORMATION THROUGH CONNECTED TECHNOLOGIES.

WHAT YOU CAN EXPECT FROM VER-MAC EQUIPMENT



THE HIGHEST QUALITY STANDARDS IN THE INDUSTRY.



EXCEPTIONAL DURABILITY.



ECO-FRIENDLY AND ENERGY EFFICIENT.



EASY TO USE, MINIMAL MAINTENANCE, EXCELLENT ROI.



SMART. CONNECTED. FUTUREPROOF.



A FOCUS ON INNOVATION.



PORTABLE CHANGEABLE MESSAGE SIGNS (PCMS)



Robust and energy-efficient, our Portable Changeable Message Signs are seen along roads around the world. Many sizes are available for various applications.

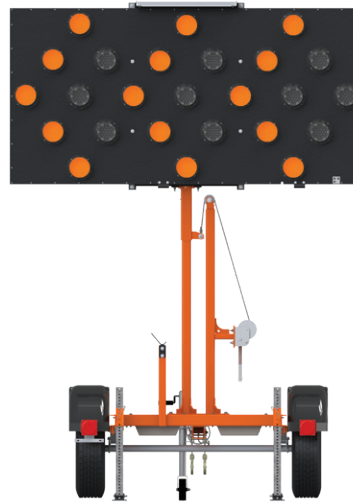
FEATURES

- ❖ Three-line and full-matrix displays
- ❖ Trailer, post, or truck mounted
- ❖ Full size and extended for DOT construction projects
- ❖ Law enforcement with radar speed feedback
- ❖ Modem, cell service and JamLogic software for remote management included

*Comparative chart on page 10.



ARROW BOARDS



Indicate lane merges with a classic Arrow Board or opt for a Smart Arrow Board that collects and publishes work zone data. Rugged construction and cost-effective operation.

FEATURES

- ❖ 15 and 25 light displays
- ❖ Trailer, skid, truck, or attenuator mounted
- ❖ Variety of brackets, mounting and support options
- ❖ Smart Arrow Board ready
- ❖ Universal retrofit kit to turn an arrow board from any manufacturer into a Smart Arrow Board
- ❖ WZDx and Waze connection



SPEED SIGNS



SPEED AWARENESS TRAILER

Display real-time information to motorists with digital Speed Signs that provide awareness and help reduce speed.

FEATURES

- Speed awareness (your speed)
- Two-digit/three-digit/full-matrix display



WORK ZONE DIGITAL SPEED LIMIT

“Workers Present” Speed Signs play a big role in protecting workers. A 2019 study shows that digital speed limit signs with flashing beacons had the biggest influence on work zone speed limit compliance.

FEATURES

- “When Workers Present” flashing beacons
- WZDx and Waze connection



SPEED WIZARD

Our award-winning Speed Wizard is the first on the market to combine a work zone digital speed limit sign and a speed awareness feedback sign on the same platform.

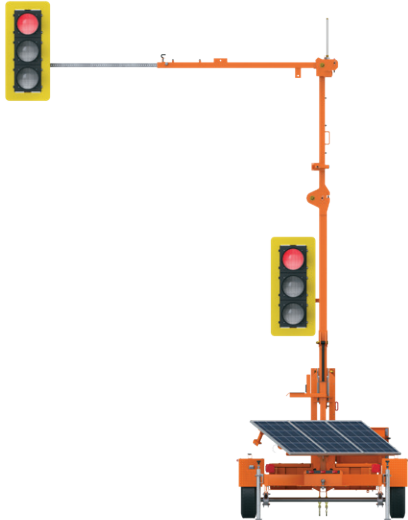
FEATURES

- Combo Digital Speed Limit and Speed Awareness display
- WZDx and Waze connection





TRAFFIC SIGNALS



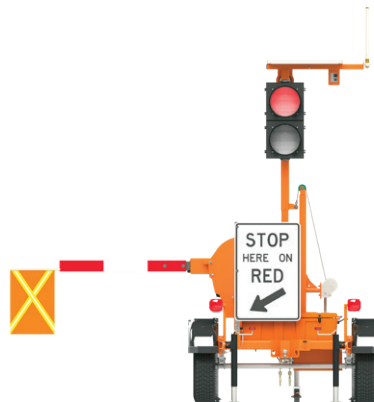
Ver-Mac's Traffic Signals are available in two technologies for phasing signals (TLD and TLG). Each technology is available on our trailer and trolley models.

FEATURES

- ❖ One or two signal head trailers
- ❖ 12" traffic signal LED lamps
- ❖ DOT construction, city, county, and private applications
- ❖ Vehicle detection, remote monitoring and programming available
- ❖ Complies with NEMA TS-5 standards
- ❖ WZDx and Waze connection



AUTOMATED FLAGGERS



Practical and easy to use, our Automated Flaggers make flagging operations much safer for workers by allowing them to flag in a safe location away from traffic.

FEATURES

- ❖ Tandem/nested tow
- ❖ 12" traffic signal LED lamps
- ❖ Wireless controller can operate one or two units
- ❖ WZDx and Waze connection



TRAFFIC SENSORS



Our compact Traffic Sensors gather lane, volume, and speed data. Combined with our JamLogic software, they are perfect for Smart Work Zone projects and traffic studies.

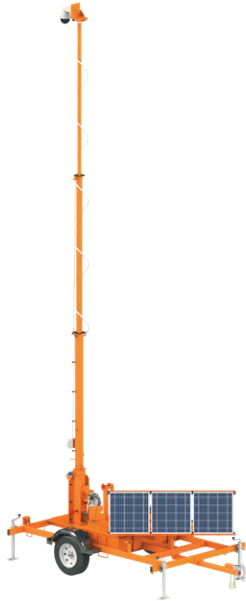
FEATURES

- ❖ Doppler and microwave radar
- ❖ Trailer, post, and vertical panel mounted (Speed-Mac)





TRAFFIC CAMERAS



Monitor your work zone, construction site or special event with our solar-powered Camera Trailers.

FEATURES

- ❖ Trolley and trailer mounted
- ❖ Variety of PTZ (Pan-Tilt-Zoom) cameras, masts heights, and security solutions

LIGHT TOWERS



Making work zones more visible and safer after dark, our Portable Light Towers operate on solar energy. No noise from a generator, no smell, and no budget spent on fuel and labor.

FEATURES

- ❖ Trolley and trailer mounted
- ❖ Variety of lighting outputs, masts heights, and lighting solutions

TRUCK ENTRY WARNING TRAILER



Our Truck Warning System alerts motorists of trucks that are about to merge into traffic.

FEATURES

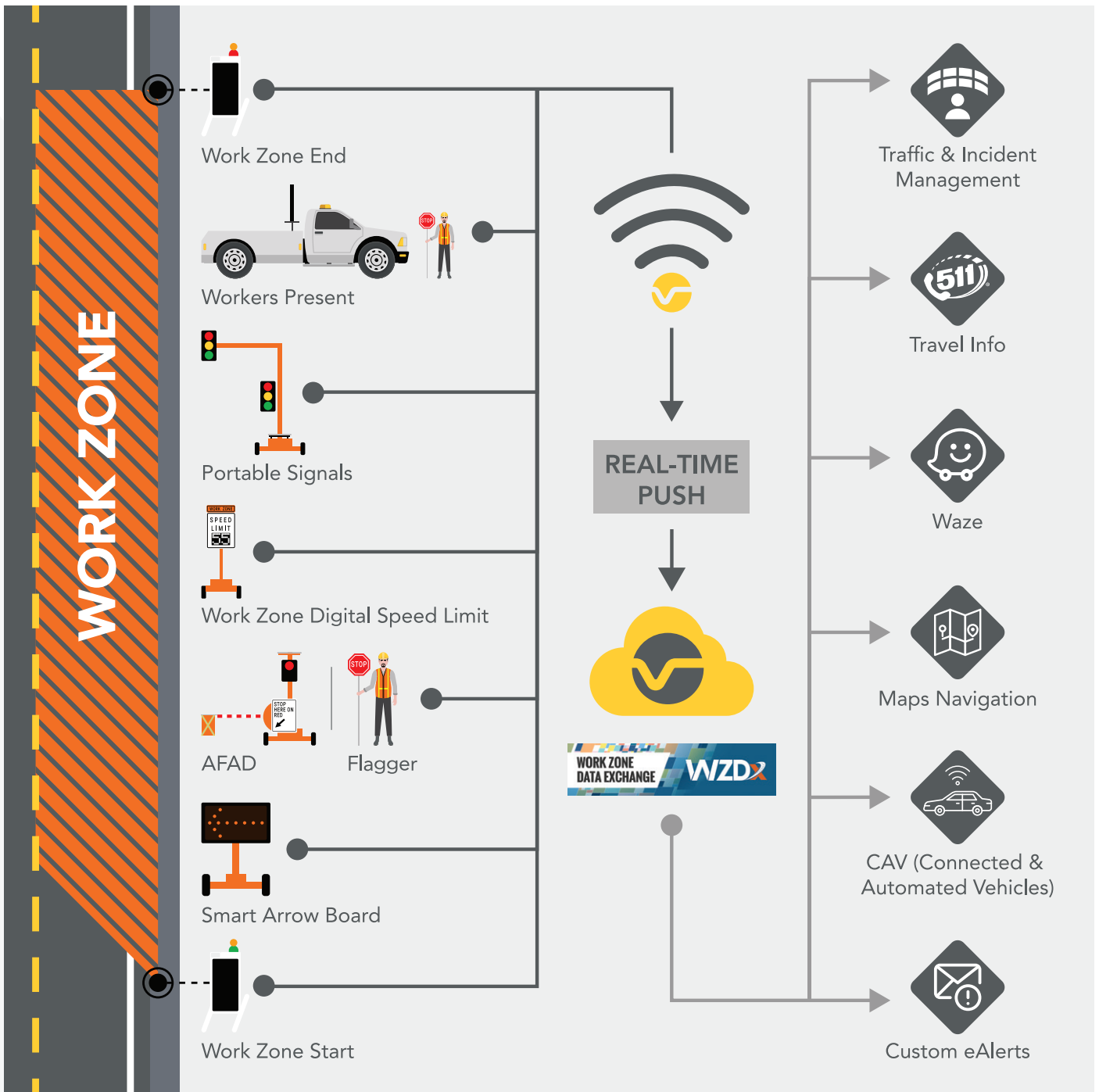
- ❖ Truck entry systems
- ❖ Warning flasher systems
- ❖ WZDx and Waze connection





CONNECTED PRODUCTS

Connected equipment allows you to share crucial work zone information with motorists, DOTs and other relevant parties in real time.





SOFTWARE

FLEET MANAGEMENT

MANAGE EQUIPMENT REMOTELY

- Save time
- Stay safely out of traffic

SMART WORK ZONE MANAGEMENT

- Collect real-time data using sensors or 3rd party data
- Automatically display messages to signs using real-time data
- Manage work zone traffic more efficiently

Name	Value	Voltage
1314	13.64 V	13.64 V
1312 05	13.48 V	13.48 V
1316 05 x	13.26 V	13.26 V
1314 15	14.31 V	14.31 V
1606 05	13.91 V	13.91 V
1618 15	13.95 V	13.95 V
1900 15	14.33 V	14.33 V
1901 05	14.05 V	14.05 V
1902 05	13.84 V	13.84 V
1941 15	14.29 V	14.29 V
1958 15	14.15 V	14.15 V
1994	14.02 V	14.02 V
959 05	12.19 V	12.19 V
SEMA 012527	13.50 V	13.50 V
SEMA 022445	13.68 V	13.68 V
SEMA 024446	13.88 V	13.88 V
SEMA 042526	12.57 V	12.57 V





TYPE OF MOUNT	MODEL #	SIZE	FEATURES						DISPLAY		APPLICATIONS						
			3-LINE	FULL-MATRIX	STEALTH TECHNOLOGY	4G MODEM WITH 10 YEAR CELL PLAN	V-SYNC WI-FI	JAMLOGIC FLEET MANAGEMENT	PANEL DIMENSIONS* (H X W)	PIXELS (H X W)	HIGHWAY CONST.	DOT	CITY & COUNTY (URBAN ZONES)	SCHOOL ZONES	LAW ENFORCEMENT	SMART WORK ZONE	SPECIAL EVENTS
TRAILER-MOUNTED	PCMS-1210	Large	●		●	●	●	●	75 x 132 in. 1917 x 3343 mm	N/A	●	●				●	●
	PCMS-1500C	Extended	●	●	●	●	●	●	83 x 145 in. 2100 x 3683 mm	30 x 56	●	●				●	●
	PCMS-1500	Large	●	●	●	●	●	●	75 x 131 in. 1917 x 3331 mm	28 x 48	●	●				●	●
	PCMS-3812	Mid	●	●	●	●	●	●	53 x 91 in. 1336 x 2305 mm	27 x 48	●	●				●	●
	PCMS-320	Mid	●	●	●	●	●	●	64 x 105 in. 1625 x 2667 mm	30 x 48	●	●	●	●		●	●
	PCMS-320RT	Mid	●	●	●	●	●	●	66 x 105 in. 1680 x 2667 mm	30 x 48		●	●	●		●	●
	PCMS-548	Small	●	●	●	●	●	●	45 x 80 in. 1142 x 2026 mm	30 x 56			●	●	●		●
	PCMS-548LE	Mini	●	●	●	●	●	●	45 x 80 in. 1142 x 2026 mm	30 x 56			●	●	●		●
	PCMS-4880	Mini HD	●	●		●	●	●	36 x 58 in. 926 x 1473 mm	48 x 80			●	●			●
TRUCK MOUNTED	TM-548	Small	●	●					48 x 78 in. 1207 x 1969 mm	30 x 56	●	●	●				
	TM-3048	Small	●	●					48 x 68 in. 1207 x 1715 mm	30 x 48	●	●	●				
	TM-2056	Mini		●					35 x 78 in. 883 x 1969 mm	20 x 56	●	●	●				
	TM-1056	Mini +		●					22 x 78 in. 559 x 1969 mm	10 x 56	●	●	●				
	TM-3812	Mid	●	●		●		●	50 1/4 x 89 1/2 in. 1276 x 2273 mm	27 x 48	●	●	●				
	TMA-3812 SCORPION II	Mid	●	●		●		●	50 1/4 x 96 in. 1276 x 2438 mm	27 x 48	●	●	●				
	TA-3812 SCORPION II	Mid	●	●		●		●	50 1/4 x 96 in. 1276 x 2438 mm	27 x 48	●	●	●				
POST MOUNTED	B-1500C	Extended	●	●		●	●	●	83 x 145 in. 2096 x 3694 mm	30 x 56	●	●	●			●	
	B-1500	Large	●	●		●	●	●	75 x 132 in. 1917 x 3343 mm	28 x 48	●	●	●			●	
	B-320	Mid	●	●		●	●	●	70 x 107 in. 1780 x 2724 mm	30 x 48	●	●	●			●	
	B-548	Small	●	●		●		●	45 x 80 in. 1146 x 2027 mm	30 x 56			●	●			

* Panel dimensions are taken from outside to outside and may vary if options are added.

Distributed By:



MS FOSTER

SERVING THE TRANSPORTATION INDUSTRY

 (219) 879-9225

 (888) 452-4053

 (219) 873.4034

 SALES@MSFOSTER.COM

 WWW.MSFOSTER.COM



VER-MAC®

VER-MAC.COM